

# DuraFon PRO Solutions Guide – Education

K-12, college and university campuses require additional systems and procedures for security and safety requirements. EnGenius cordless phones and radios provide a powerful tool for staff to improve communication and increase security throughout the entire campus.

## Cordless Mobility

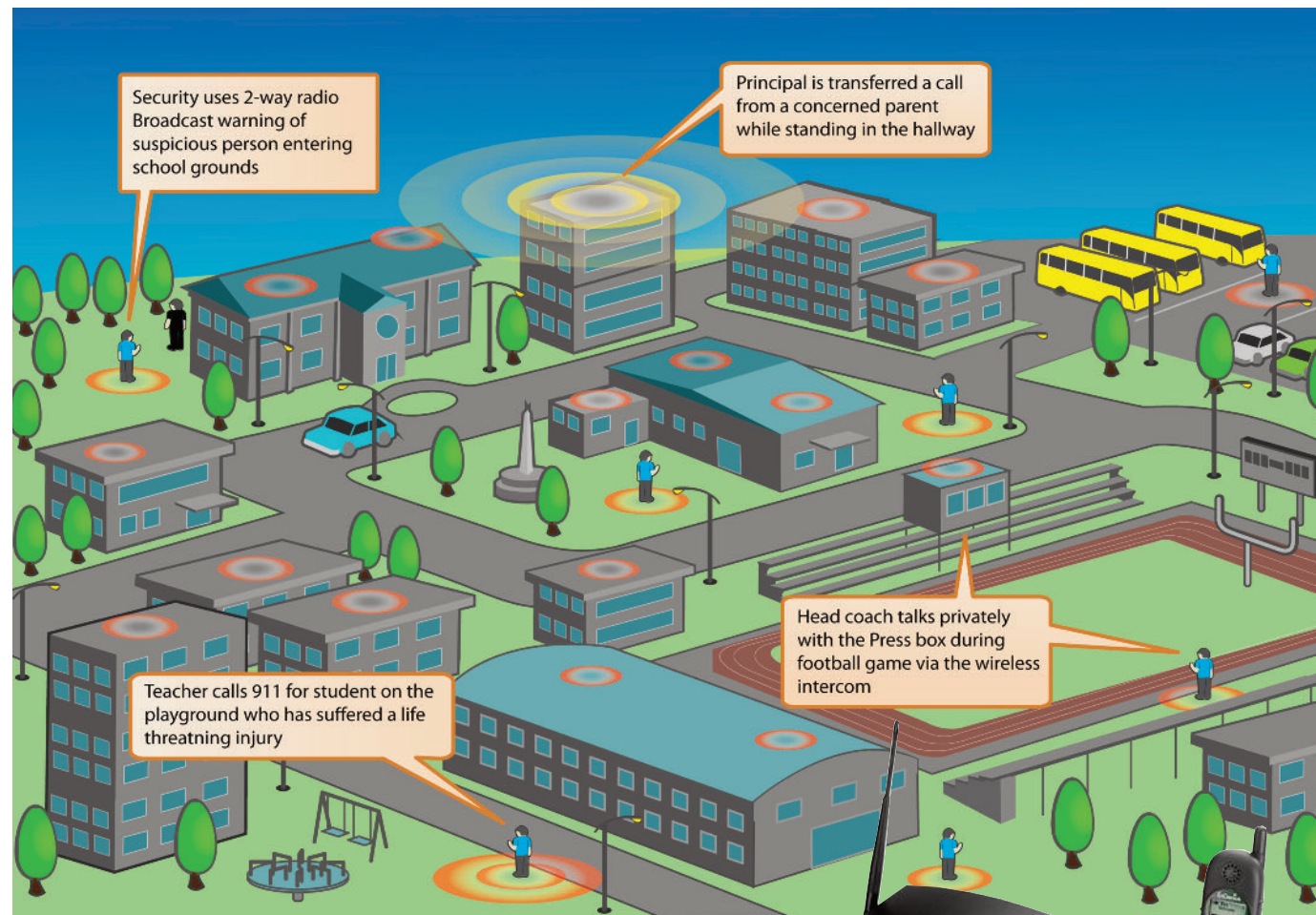
- Principals stay in touch throughout the campus
- Teachers will never miss an important call from a parent, even when away from the classroom
- 911 emergency call from anywhere on the campus
- Outside vendors can easily contact support staff (or maintenance)

## Instant Communication

- Quick internal communication
- "Push-2-Talk" 2-Way Radio function
- Private and secure wireless intercom function
- No airtime charges
- No FCC licensing requirements
- Works during power failures and "brown outs"

## Increased Productivity

EnGenius DuraFon PRO Cordless systems boost productivity and enhance safety by eliminating communication delays. When disturbances or emergencies occur, principals, teachers, coaches and crossing guards can take immediate action by calling 911 directly from their cordless handset or use the 2-way radio function to immediately notify other staff members of the situation. The DuraFon solution allow administrators a rapid, coordinated response to any situation using a dependable technology that is user friendly and within their budget.



# EnGenius Technologies Inc.

Experts in wireless communications. This expertise means finding solutions in the most difficult of scenarios using innovative products and designs. EnGenius products keep things simple and deliver an extremely cost effective wireless solution for applications that require voice communications. EnGenius DuraFon and FreeStyl products are the first choice for facilities that require Workplace Mobility.

## What kind of coverage/range can I expect?

With the DuraFon Long Range Cordless Telephones we typically see ranges of up to 12 floors of In-Building penetration, 250,000 sq. ft. of facility coverage and even up to 3000 acres of outdoor coverage. Our 2-way radio feature offers slightly less coverage but that can be enhanced with the addition of the DuraFon PRO Repeater to match the range of our telephone when required.

## Is the DuraFon system compatible with our existing phone system (PBX)?

Yes, the EnGenius DuraFon offers a standard analog interface which allows the DuraFon PRO to work seamlessly with virtually any and all customer PBX systems. The DuraFon PRO handset becomes an extension number from your existing telephone system.

## How many handsets/radios can the DuraFon PRO support?

The DuraFon PRO is extremely expandable, you can start with our four line base station and support up to ninety of our DuraFon or DuraWalkie handsets. If you require more cordless extensions from your PBX then you can simply add up to seven additional DuraFon PRO-BU (base units) for a total of thirty-two lines and ninety handsets/radios.

## What is the difference between the DuraFon and DuraWalkie?

Our unique DuraFon handset is a combination Telephone and 2-Way radio. Our DuraWalkie is however just a 2-Way radio which will communicate with other DuraFon handsets or DuraWalkies. DuraWalkies should be considered for staff that do not require access to the facilities phone system but still require immediate internal communications via our exclusive 2-Way radio system.

## What about security, is it prone to network attacks?

The DuraFon PRO provides military standards to safeguard and protect the privacy and personal information that might be less secure in competitive products. Our 900MHz digital spread spectrum and frequency hopping technology will not be prone to "Network Attacks" or other concerns found in today's wireless network devices. In addition because of our operating frequency the DuraFon will not interfere with any existing WiFi devices operating at the 2.4 or 5.8 GHz spectrum.

## Who would benefit from the EnGenius DuraFon PRO solution?

- ✓ Principals
- ✓ Vice Principals
- ✓ Teachers
- ✓ Athletic Department
- ✓ Security
- ✓ Maintenance / Janitorial
- ✓ Special Events
- ✓ Playground Staff
- ✓ Crossing / Traffic Control

Authorized EnGenius Reseller: