

Wireless USB Adapter

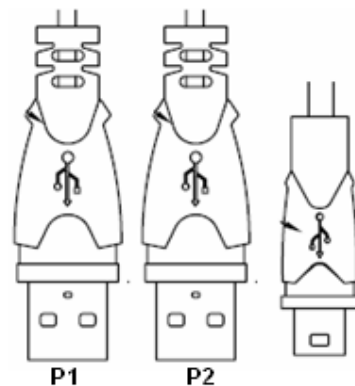
I. Install Device Driver

Insert the CD provided in the package into your CD/DVD-ROM. The setup should run automatically. If the setup does not start shortly, please manually browse the file **index.htm** with a standard file or web browser.

Please select the driver for your operation system and follow the instructions given on the screen to complete the driver/utility installation.


II. Install USB Adapter

1. Insert the Wireless USB adapter into a free USB slot.
If you are given a cable with three USB plugs, please make sure both P1 and P2 USB plugs are inserted into available slots.
2. After Windows has restarted it will detect new hardware.
3. The drivers for the card will be automatically installed.



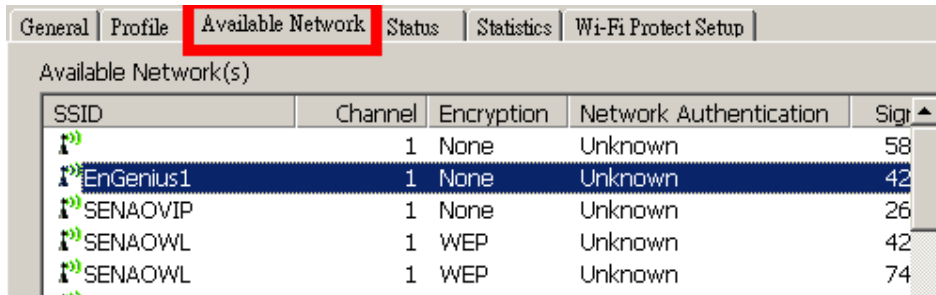
Connecting to a WPS secured network


The following information is only applicable on products with WPS button.

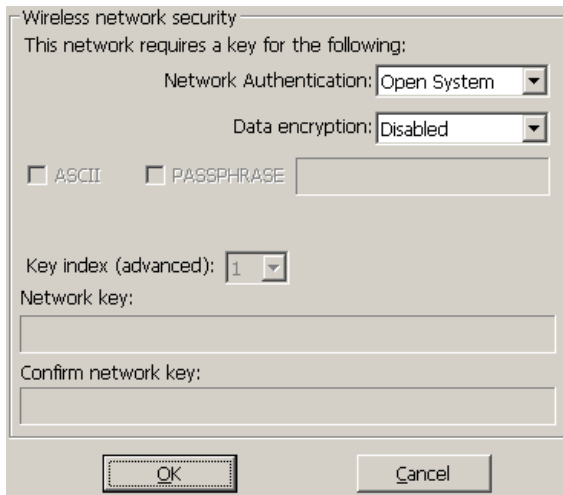
1. Press the WPS button on your AP/Router.
2. Press the WPS button on your USB adapter..
3. Wait until synchronization has completed.
4. The wireless adapter will try to connect to the AP. The utility icon will turn to blue upon successful connection. 

Wireless USB Adapter

Connecting to a wireless network



1. Double click on the configuration utility icon. 
2. Click on **Available Network** for site-survey.
3. Double click on your preferred AP to initiate connection.
4. Enter security settings if any. Click **OK** when done.



5. The wireless adapter will try to connect to the selected network. If the connection attempt is successful the configuration utility icon will turn to blue. 