

# Quick Start Guide

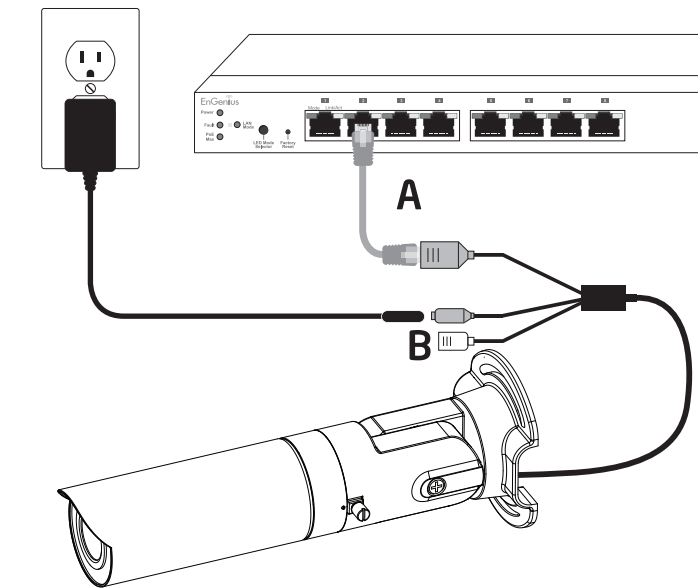
2 Megapixel Full HD Bullet Camera  
EnGenius Cloud Services  
(EnViewer Finder / EnViewer)  
version 1.0

EDS5250

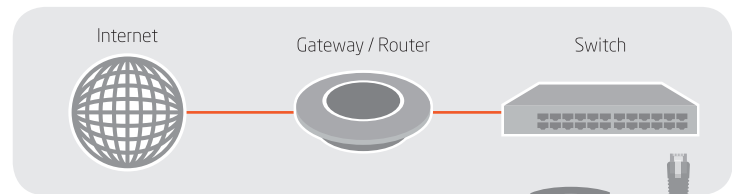
## 1 Connecting to Camera

### Basic Connection (without PoE)

- A) Connect the camera to a switch via **Ethernet Cable**.
- B) Connect the supplied power cable from the camera to the power outlet.



## Before Getting Started



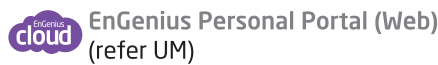
Ensure that your Gateway/Router is already connected to the Internet for proceeding the camera setup. (UID/P2P, EnGeniusDDNS, and Mobile APP)



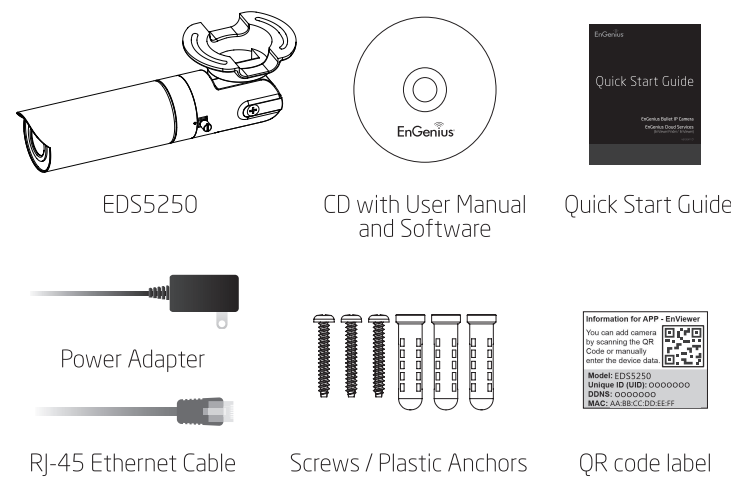
For Local Network



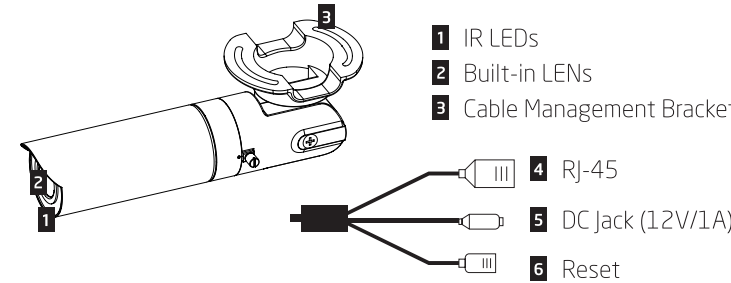
For Remote Network



## Package Contents



## Interface



## Technical Support

Country of Purchase	Service Center	Service Information
<b>North America</b> www.engeniustech.com	<b>Canada</b>	rma@engeniustech.com Toll Free: (+1) 888 397 2788 Local: (+1) 905 940 8181
www.engeniustech.com	<b>Los Angeles, USA</b>	support@engeniustech.com Toll Free: (+1) 888 735 7888 Local: (+1) 714 432 8668
<b>Central &amp; South America</b> es.engeniustech.com pg.engeniustech.com	<b>Miami, USA</b>	miamisupport@engeniustech.com Miami: (+1) 305 887 7378 Sao Paulo, Brazil: (+55) 11 3957 0303 D.F, Mexico: (+52) 55 1163 8894
<b>Europe</b> www.enginiusnetworks.eu	<b>Netherlands</b>	support@enginiusnetworks.eu (+31) 40 8200 887
<b>Africa CIS Middle East Russia</b> www.enginius-me.com	<b>Dubai, UAE</b>	support@enginius-me.com Toll Free: U.A.E.: 800-EnGenius 800-364-364-87 General: (+971) 4 357 5599
<b>Asia Oceania</b> www.engeniustech.com.sg	<b>Singapore</b>	www.engeniustech.com.sg/e_warranty_form techsupport@engeniustech.com.sg Toll Free: Singapore: 1800 364 3648
<b>Others</b> www.enginiusnetworks.com	<b>Taiwan, R.O.C</b>	technology@senaoo.com

## ONVIF Compliance Benefits

ONVIF is a global interface standard that facilitates interoperability among IP-based physical security products regardless of the manufacturers. It is guaranteed that different types of NVR/ VMS software flexibility combining EnGenius ONVIF IP camera.

To learn more in-depth of the NVR/VMS system operation, please contact NVR/ VMS software administrators.

### How to add EnGenius camera using NVR/ VMS system(s)?

- Step 1:** Use of NVR/ VMS default search
- Step 2:** If camera cannot be detected by Step 1, please manually enter device's IP address and login info. Then select "ONVIF Camera" configuration to connect
- Step 3:** Click "Test" to verify the proper connectivity
- Step 4:** Click "Finish"

In the United States of America, use of video or audio equipment for recording the image of a person without their knowledge and consent is prohibited in certain states, commonwealths, municipalities or jurisdictions. The enduser assumes all liability for compliance with applicable state, local and federal laws. End-users in other countries assume all liability for compliance in their country. Product features, specifications, or industrial design of the camera product are subject to change without notice, and actual product appearance may differ from what is depicted on product packaging, on websites, or in marketing material. EnGenius Technologies, Inc. is not responsible or liable for any property loss or damage in any site or deployment where EnGenius camera products are used. Apple, the Apple logo, iPad and iPhone are trademarks of Apple Inc., registered in the U.S. and other countries. App Store is a service mark of Apple Inc. Android and Google Play are trademarks of Google Inc. Trademarks and registered trademarks are the property of their respective owners. For United States of America: Copyright ©2015 EnGenius Technologies, Inc. All rights reserved.

## 2 Setup EnViewer Finder (PC-based Wizard for Local Network)

The EnGenius IP Camera is set to DHCP by default. If you have a router or DHCP server providing addresses on your network, please check your DHCP Client Table or try EnViewer Finder.

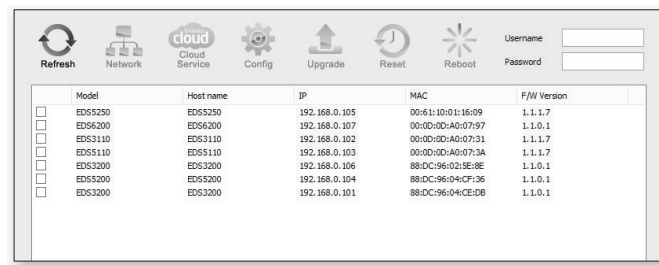
**Note:** If you do not have a DHCP server, the camera default IP address is 192.168.0.200.

**EnViewer Finder** is the setup wizard assisting you to configure the Camera connected to your network (LAN).

- A) Select and run the EnViewer Finder from the included CD. Follow the instruction to complete the installation.



The wizard will search all Cameras within your home network (LAN).



- B) Select the target Camera from the list.

Model	Host name	IP	MAC	F/W Version
<input checked="" type="checkbox"/> EDS5250	EDS5250	192.168.0.103	88DC9604CE0B	1.1.0.1
<input type="checkbox"/> EDS5200	EDS5200	192.168.0.106	88DC9604CE0B	1.1.0.1
<input type="checkbox"/> EDS5200	EDS5200	192.168.0.104	88DC9604CE0B	1.1.0.1
<input type="checkbox"/> EDS5200	EDS5200	192.168.0.101	88DC9604CE0B	1.1.0.1

- C) Enter the Username and Password of the Camera on the top right corner. The default value of both username and password is **admin**.

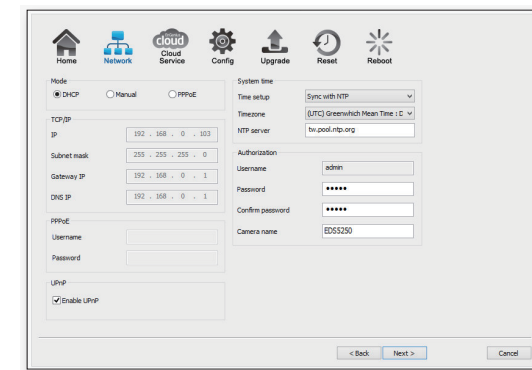
Username

admin

Password

admin

- D) Click on **Next >** to log in.



- E) The wizard will guide you to complete Camera Settings step by step.



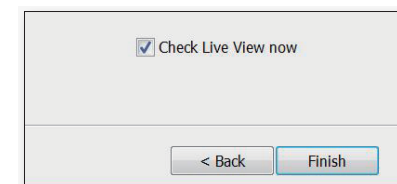
**Network:** Set up IP Address, System Time, and Administrator settings.

**Note:** Please note the DHCP IP given by the Gateway / Router or you can select the Manual mode to assign a Fixed IP for the Camera.

**Cloud Service:** You can give an alias for your personal DDNS Domain that is easy to remember and to share with others in the future.

**Config :** Set up the video Resolution, Compression Codec, and Maximum frame rate.

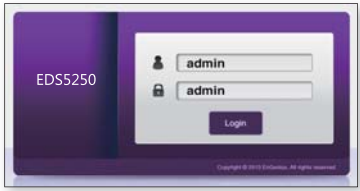
- F) Click "**Finish**" to colse this utility, if you want to open the camera live view streaming, please ensure the "Check Live View now" is ticked.



**Note:** You can also enter the Web-based Live View page through your exclusive EnGenius DDNS domain, e.g. 00000000.enginiusddns.com.

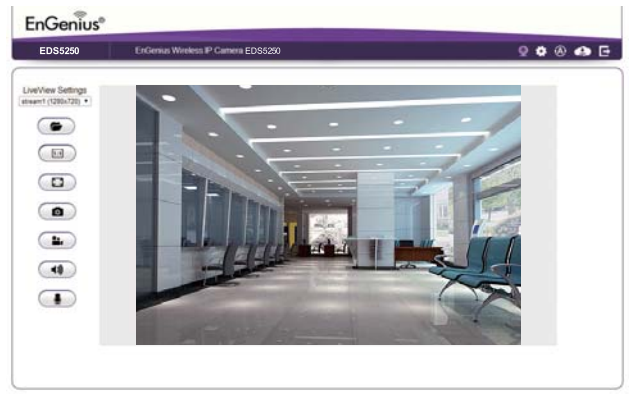
## 3 Access Live View

Enter the Username and Password for proceeding to log in the Live View, the default value of both username and password is **admin**. Click on **Login** to access the Live View.



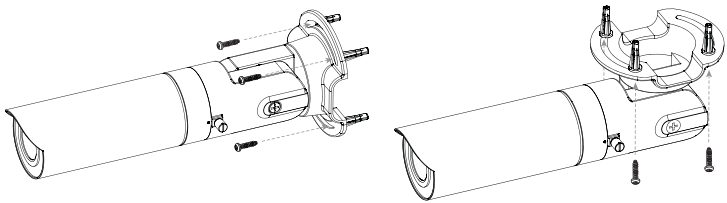
**Note:** You will be guided to download the WebCMS plug-in at the first time accessing the page or if there is updated version available. (for Windows O/S only)

You should now see the Live View streaming successfully.

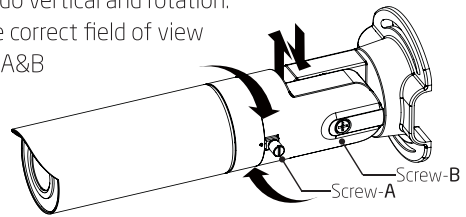


## 4 Mounting the Camera

- A)** Locate an area on the wall. Make sure the area is capable of supporting the weight of the camera.
- B)** Mark and drill pilot holes aligning to the screw holes at the base of the mounting bracket.
- C)** Insert the plastic anchors into the pilot holes, and align the holes at the base of the bracket with the plastic anchor.
- D)** Once aligned, insert the provided screws through the holes at the base of the camera bracket, and ensure the cable is seated in the cable channel. Screw and secure bracket in place.



- E)** Please loosen the Screw-A/B before you turn the camera housing to do vertical and rotation. Align the camera to the correct field of view and tighten the Screw-A&B to lock it into place.



## 5 Setup EnGenius VMS

(the PC-based VMS, work with EnGenius IP Camera only)

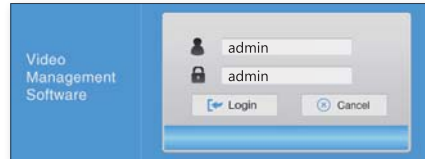
**EnGenius VMS** is a free bundle Video Management Software can support multiple cameras.

### How to run VMS and add camera(s)

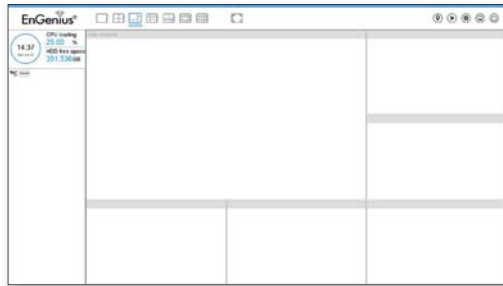
- A)** Select and run the EnGenius\_VMS\_Install.exe from the included CD. Click Finish to complete the installation process.



The default value of username and password is **admin**.



- B)** Run **EnGenius VMS** to execute Live Monitor.



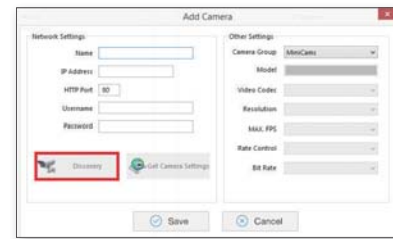
- C)** Go to **Configuration** and select camera to obtain the camera setting panel.



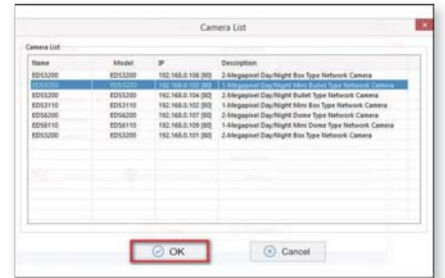
- D)** Go to Camera tab, click **Add** to open Add Camera page



- E)** Click on **Discovery** to detect IP cameras under local area network (LAN).



- F)** Select one of the IP cameras that are available and click **OK**.



- G)** Enter the camera username & password and click **Get Camera Settings** to verify, then click **Save** to add the camera and exit.

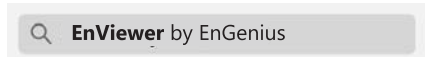


- H)** Repeat the Steps-D~G until all cameras are being added , then back to Live Monitor.

## EnViewer™ APP Setup

## Download EnViewer

Scan the QR code or search for **"EnViewer by EnGenius"** to download the APP on your device.



Google Play  
for Android™ Devices



or

App Store  
for iPhone® and iPad®



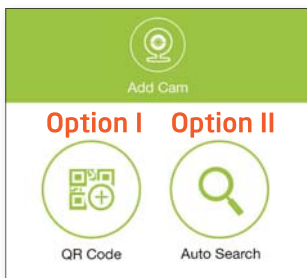
## 1 Get Started

Find the QR code label of EnViewer inside the packaging that contains the unique QR Code for your Camera and other information for advanced settings.



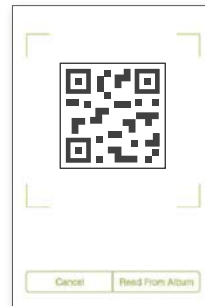
## 2 Setup Camera

Follow the EnViewer wizard, you will be directed to the step selecting the way to add Camera.

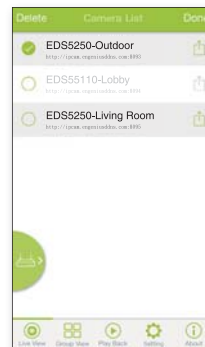


### Option I - Scan QR Code

- A)** Click on **QR Code** and follow the instruction to scan the QR code on the included QR Code label.



- B)** Click on **Yes** to add the device to Camera List.

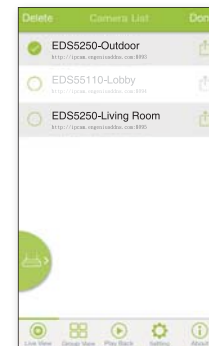
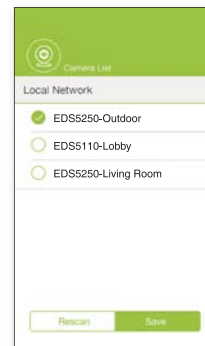


### Option II - Auto Search

It is suggested to adopt Auto Search if you are adding more than one camera within your local network at the same time.

- A)** Click on **Auto Search**.

- B)** All Cameras within the local network will be listed. Tap the device(s) you would like to add and click on **Save**.



## 3 Live View

Simply tap the device from the Camera List, and you will be viewing the live video streaming on your smart device.

