

Quick Start Guide

2 Megapixel Wi-Fi Full HD Bullet Camera

EnGenius Cloud Services
(EnViewer Finder / EnViewer)

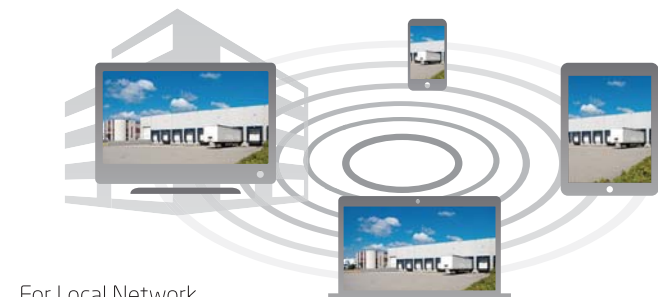
version 1.0

EDS5255

Before Getting Started



Please ensure your Gateway/Router has Internet connection to proceed with the camera setup.



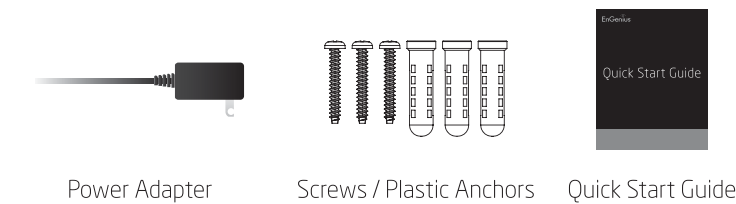
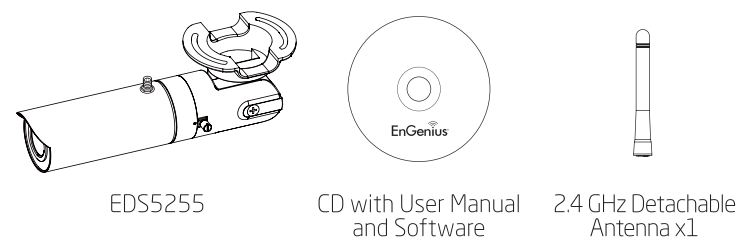
For Local Network



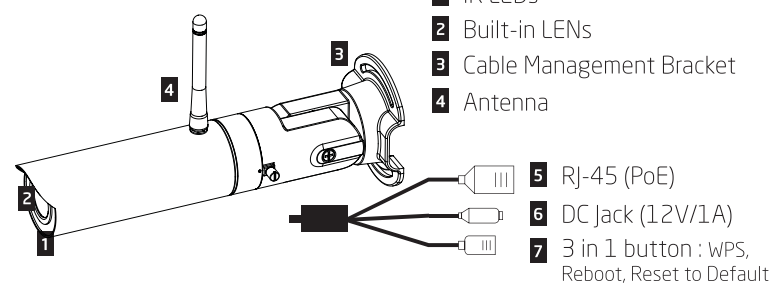
For Remote Network



Package Contents



Interface

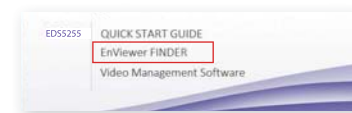


2 Setup EnViewer Finder and Wi-Fi (PC-based Wizard for Local Network)

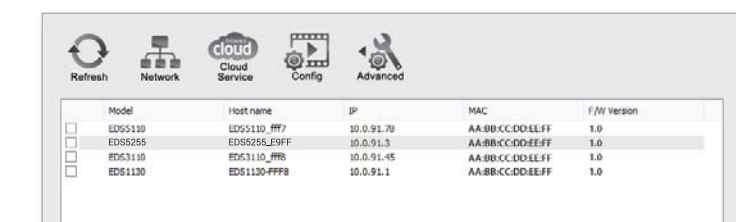
EnViewer Finder is the setup wizard assisting you to configure the camera connected to your network (LAN).

Note: If you do not have DHCP server connected, the camera will change IP address to **192.168.1.200** automatically 3 minutes after booting up.

A) Run the CD on your computer and follow the EnViewer Finder setup instructions.



The wizard will search all cameras within your home network (LAN).



Technical Support

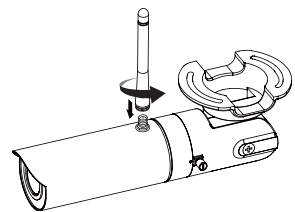
| Country of Purchase | Service Center | Service Information |
|--|-------------------------|---|
| North America www.engeniustech.com | Canada | rma@engeniustech.com Toll Free: (+1) 888 397 2788 Local: (+1) 905 940 8181 |
| www.engeniustech.com | Los Angeles, USA | support@engeniustech.com Toll Free: (+1) 888 735 7888 Local: (+1) 714 432 8668 |
| Central & South America es.engeniustech.com pg.engeniustech.com | Miami, USA | miamisupport@engeniustech.com Miami: (+1) 305 887 7378 Sao Paulo, Brazil: (+55) 11 3957 0303 D.F, Mexico: (+52) 55 1163 8894 |
| Europe www.engeniustech.com | Netherlands | support@engeniustech.com (+31) 40 8200 887 |
| Africa CIS Middle East Russia www.engeniustech.com | Dubai, UAE | support@engeniustech.com Toll Free: U.A.E.: 800-EnGenius 800-364-364-87 General: (+971) 4 357 5599 |
| Asia Oceania www.engeniustech.com.sg | Singapore | www.engeniustech.com.sg/e_warranty_form techsupport@engeniustech.com.sg Toll Free: Singapore: 1800 364 3648 |
| Others www.engeniustech.com | Taiwan, R.O.C | technology@senao.com |

Notes

In the United States of America, use of video or audio equipment for recording the image of a person without their knowledge and consent is prohibited in certain states, commonwealths, municipalities or jurisdictions. The enduser assumes all liability for compliance with applicable state, local and federal laws. End-users in other countries assume all liability for compliance in their country. Product features, specifications, or industrial design of the camera product are subject to change without notice, and actual product appearance may differ from what is depicted on product packaging, on websites, or in marketing material. EnGenius Technologies, Inc. is not responsible or liable for any property loss or damage in any site or deployment where EnGenius camera products are used. Apple, the Apple logo, iPad and iPhone are trademarks of Apple Inc., registered in the U.S. and other countries. App Store is a service mark of Apple Inc. Android and Google Play are trademarks of Google Inc. Trademarks and registered trademarks are the property of their respective owners. For United States of America: Copyright ©2015 EnGenius Technologies, Inc. All rights reserved.

0 Installation

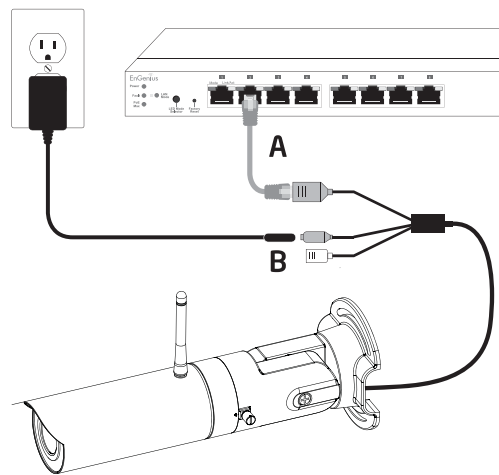
Screw the supplied antenna to the camera.



1 Connecting to Camera

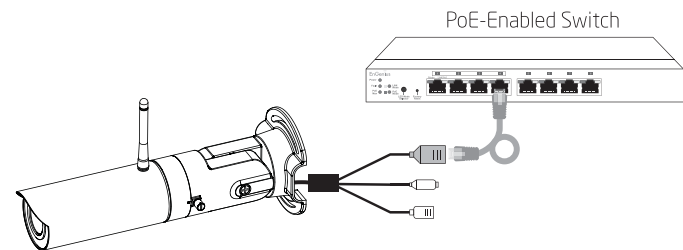
Basic Connection (without PoE)

- A)** Connect the camera to a switch via **Ethernet Cable**.
- B)** Connect the supplied power cable from the camera to the power outlet.

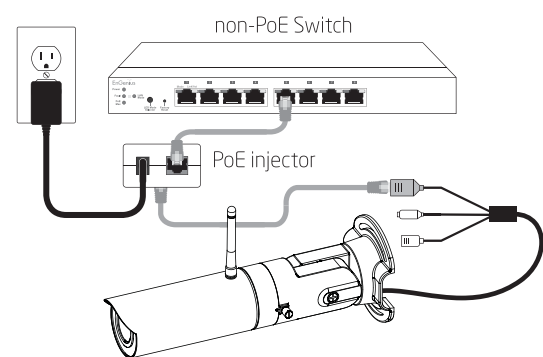


Power over Ethernet (PoE) Connection

Option 1) When connecting to **PoE-Enabled Switch**:
This is a PoE compliant camera. You can connect the Ethernet Cable from the camera to a PoE-enabled Switch.



Option 2) When connecting to a **non-PoE Switch**:
Connect the camera to a non-PoE Switch via PoE Injector (optional).



B) Select the target camera from the list.

| | Model | Host name | IP | MAC | F/W version |
|-------------------------------------|---------|-------------|------------|------------------|-------------|
| <input type="checkbox"/> | EDS110 | EDS110_#17 | 10.0.91.78 | AA-BB-CC-DD-EF-F | 1.0 |
| <input checked="" type="checkbox"/> | EDS5255 | EDS5255_#17 | 10.0.91.3 | AA-BB-CC-DD-EF-F | 1.0 |
| <input type="checkbox"/> | EDS110 | EDS110_#18 | 10.0.91.45 | AA-BB-CC-DD-EF-F | 1.0 |
| <input type="checkbox"/> | EDS1130 | EDS1130-#18 | 10.0.91.1 | AA-BB-CC-DD-EF-F | 1.0 |

C) Enter the Username and Password of the camera . The default value of both username and password is **admin**.

Username

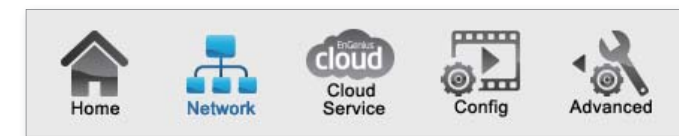
admin

Password

admin

D) Click on **Next >** to log in.

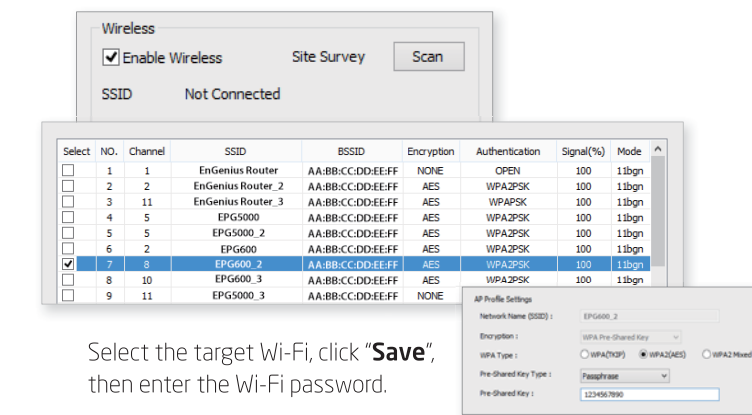
E) The wizard will guide you to complete the camera settings step by step.



Network: Set up IP Address, System Time, Wi-Fi, and Administrator settings including change of password for the camera.

Note: You can select **DHCP** mode for default setting, or select **Manual** mode to assign a fixed IP Address for the camera.

Set up Wi-Fi : Click on the **Scan** to search the Wi-Fi nearby.



Select the target Wi-Fi, click **"Save"**, then enter the Wi-Fi password.

Continue with the process by clicking **"Next"** to complete the Wi-Fi setup

Cloud Service: You can enable the **DDNS** Service and create your own personal Domain name in the DDNS alias field for remote accessing or sharing with others later on.

Config : Set up the Video Resolution, Compression Codec, and Maximum Frame Rate.

F) Click **"Finish"** to close this utility. Double click the camera in the Camera List for video live view streaming.

Note: Once you have finished the process, your device is now connected to Wi-Fi. **Please remove the Ethernet Cable for Wi-Fi usage.**

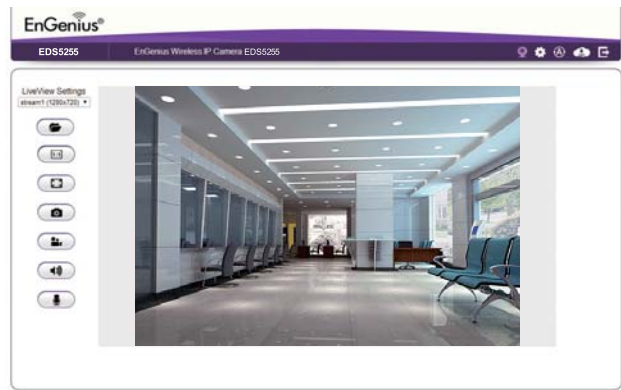
3 Access Live View

Please enter default username (**admin**) and password (**admin**) to access live view.



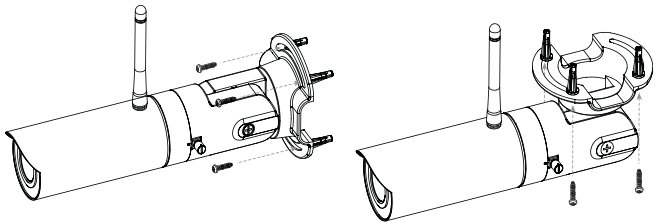
Note: You will be asked to download the **WebCMS** plug-in either for the first attempt or an updated version available.

You should now see the Live View streaming successfully.

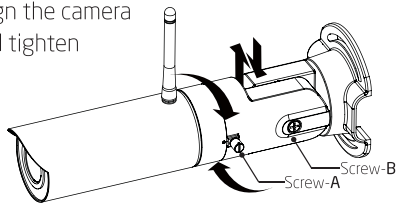


4 Mounting the Camera

- A)** Locate an area on the wall. Make sure the area is capable of supporting the weight of the camera.
- B)** Mark and drill pilot holes aligning to the screw holes at the base of the mounting bracket.
- C)** Insert the plastic anchors into the pilot holes, and align the holes at the base of the bracket with the plastic anchor.
- D)** Once aligned, insert the provided screws through the holes at the base of the camera bracket, and ensure the cable is seated in the cable channel. Screw and secure bracket in place.



- E)** Please loosen Screw-A/B first to adjust camera position and angle. Align the camera to the correct field of view and tighten Screw-A&B.



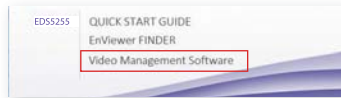
5 Setup EnGenius VMS

(the PC-based VMS, work with EnGenius IP Camera only)

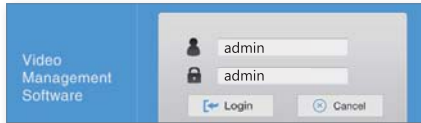
EnGenius VMS is a free bundle Video Management Software can support multiple cameras.

How to run VMS and add camera(s)

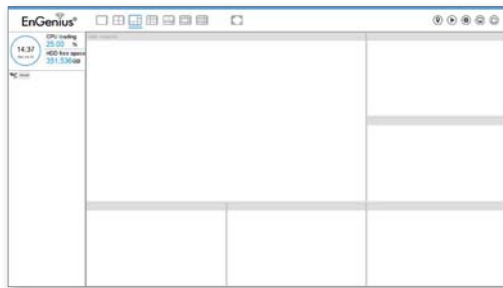
- A)** Select and run the VMS from the CD. Continue with the installation process.



The default value of username and password is **admin**.



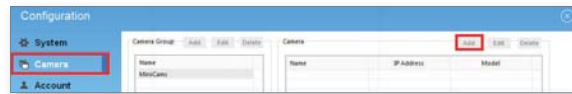
- B)** Run **EnGenius VMS** to execute live monitor.



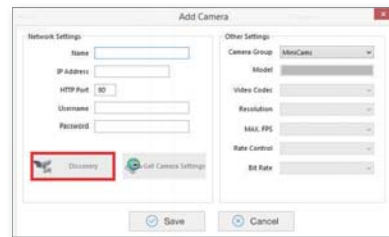
- C)** Go to **Configuration** and select camera to obtain the camera setting panel.



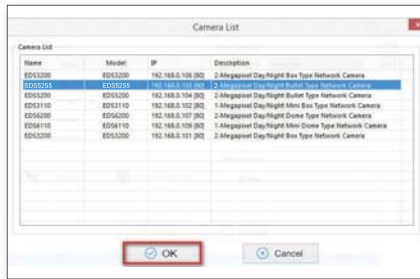
- D)** Go to Camera tab, and click **Add** on the top right side of the Camera page.



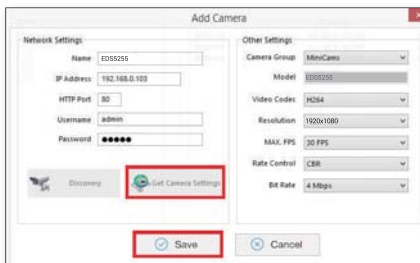
- E)** Click on **Discovery** to detect IP cameras under local area network (LAN).



- F)** Select one of the IP cameras that is available and click **OK**.



- G)** Enter the camera username & password and click **Get Camera Settings** to verify. Then click **Save** to add the camera and exit.

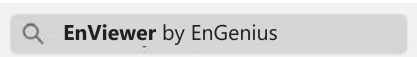


- H)** Repeat Step **D)** to **G)** until all desired cameras are added. You can now monitor all cameras in live view.

EnViewer™ APP Setup

Download EnViewer

Scan below QR code or download "**EnViewer by EnGenius**" APP from your mobile device.



Google Play
for Android™ Devices



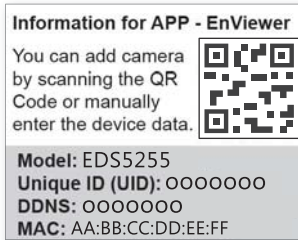
or

App Store
for iPhone® and iPad®



1 Get Started

Find the EnViewer QR Code Label inside the box that is specifically for your camera and other advanced setting information.

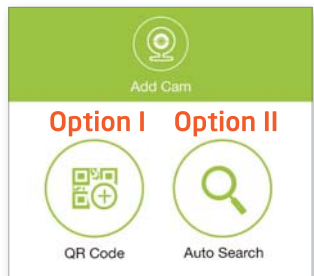


Prior to the usage of EnGenius Cloud Service, please ensure the following actions have been completed.

- A)** Camera device **DDNS** has been **enabled**.
- Note:** From the Web Management Page: **Network > EnGenius Cloud Service**
- B)** Camera device **UPnP** and **UPnP Traversal** are both **enabled**.
- C)** Network protocol **UPnP (Universal Plug and Play) Traversal** function has been **enabled** from your Internet Administrator or ISP (Internet Service Provider).

2 Setup Camera

Follow the EnViewer Wizard instruction, you will have two options to add camera.

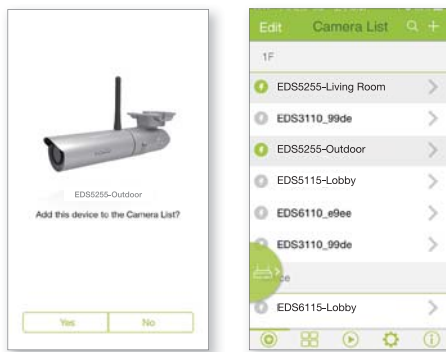


Option I - Scan QR Code

- A)** Scan the **QR Code** with the provided label.



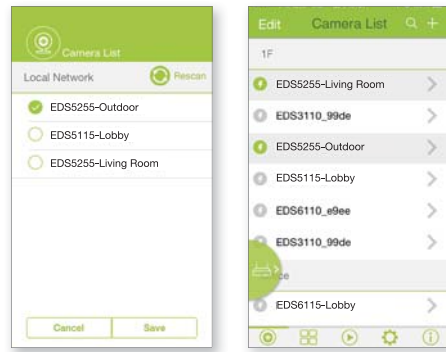
- B)** Click "**Yes**" to add the device in the Camera List.



Option II - Auto Search

This option is recommended if you want to add multiple cameras within your local network at the same time.

- A)** Click on **Auto Search**.



- B)** All cameras within the local network will be listed. Select the device(s) you would like to add and click on **Save**.

3 Live View

Simply select the desired camera to access video live view.

