

# Quick Start Guide

2 Megapixel Wi-Fi Full HD Dome Camera

EnGenius Cloud Services  
(EnViewer Finder / EnViewer)

version 1.0

EDS6255

## 1 Connecting to Camera

### Basic Connection (without PoE)

- A)** Connect the camera to a switch via **Ethernet Cable**.  
**B)** Connect the supplied power cable from the camera to the power outlet.

## Before Getting Started



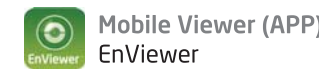
Please ensure your Gateway/Router has Internet connection to proceed with the camera setup.



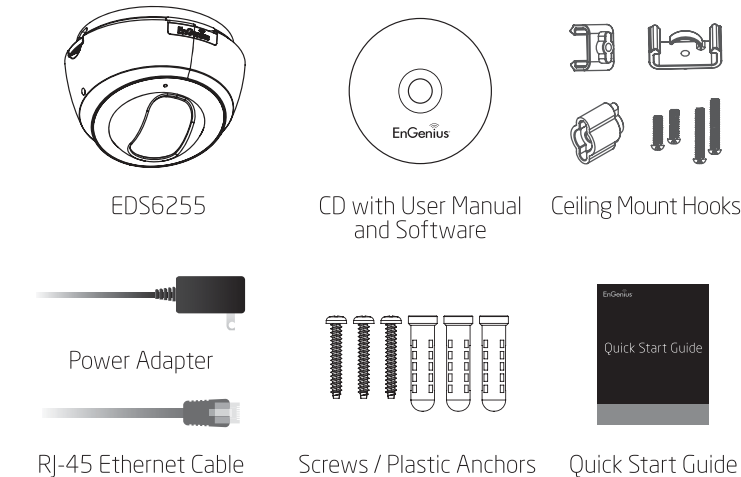
For Local Network



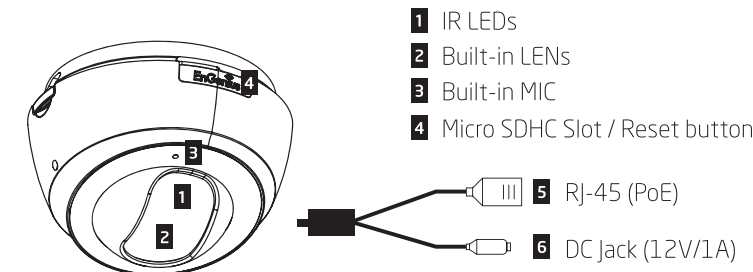
For Remote Network



## Package Contents



## Interface

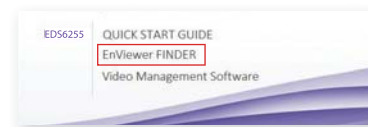


## 2 Setup EnViewer Finder and Wi-Fi (PC-based Wizard for Local Network)

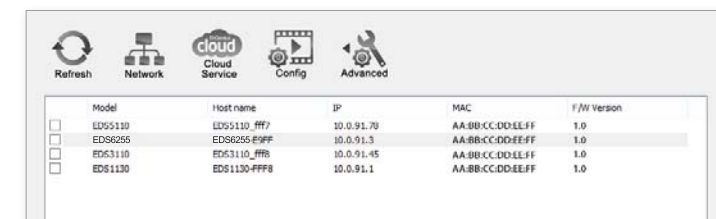
EnViewer Finder is the setup wizard assisting you to configure the camera connected to your network (LAN).

**Note:** If you do not have DHCP server connected, the camera will change IP address to **192.168.1.200** automatically 3 minutes after booting up.

- A)** Run the CD on your computer and follow the EnViewer Finder setup instructions.



The wizard will search all cameras within your home network (LAN).



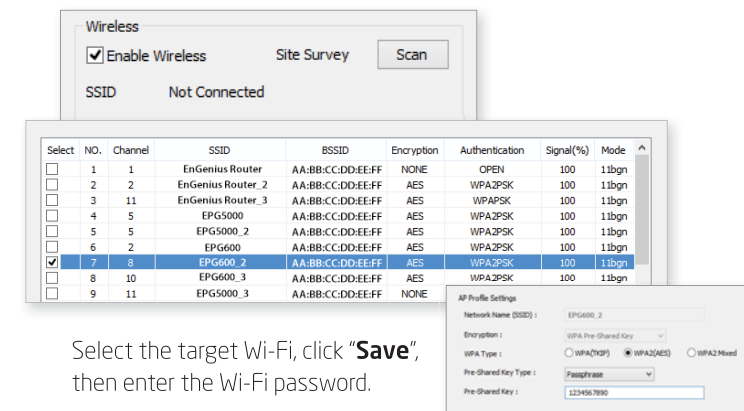
## Technical Support

Country of Purchase	Service Center	Service Information
<b>North America</b> www.engeniustech.com	<b>Canada</b>	mna@engeniustech.com Toll Free: (+1) 888 397 2788 Local: (+1) 905 940 8181
www.engeniustech.com	<b>Los Angeles, USA</b>	support@engeniustech.com Toll Free: (+1) 888 735 7888 Local: (+1) 714 432 8668
<b>Central &amp; South America</b> es.engeniustech.com pg.engeniustech.com	<b>Miami, USA</b>	miamisupport@engeniustech.com Miami: (+1) 305 887 7378 Sao Paulo, Brazil: (+55) 11 3957 0303 D.F. Mexico: (+52) 55 1163 8894
<b>Europe</b> www.engeniustech.com	<b>Netherlands</b>	support@engeniustech.com (+31) 40 8200 887
<b>Africa CIS Middle East Russia</b> www.engeniustech.com	<b>Dubai, UAE</b>	support@engeniustech.com Toll Free: U.A.E.: 800-EnGenius 800-364-364-87 General: (+971) 4 357 5599
<b>Asia Oceania</b> www.engeniustech.com.sg	<b>Singapore</b>	www.engeniustech.com.sg/e_warranty_form techsupport@engeniustech.com.sg Toll Free: Singapore: 1800 364 3648
<b>Others</b> www.engeniustech.com	<b>Taiwan, R.O.C</b>	technology@senao.com

## Notes

In the United States of America, use of video or audio equipment for recording the image of a person without their knowledge and consent is prohibited in certain states, commonwealths, municipalities or jurisdictions. The enduser assumes all liability for compliance with applicable state, local and federal laws. End-users in other countries assume all liability for compliance in their country. Product features, specifications, or industrial design of the camera product are subject to change without notice, and actual product appearance may differ from what is depicted on product packaging, on websites, or in marketing material. EnGenius Technologies, Inc. is not responsible or liable for any property loss or damage in any site or deployment where EnGenius camera products are used. Apple, the Apple logo, iPad and iPhone are trademarks of Apple Inc., registered in the U.S. and other countries. App Store is a service mark of Apple Inc. Android and Google Play are trademarks of Google Inc. Trademarks and registered trademarks are the property of their respective owners. For United States of America: Copyright ©2015 EnGenius Technologies, Inc. All rights reserved.

Set up Wi-Fi : Click on the **Scan** to search the Wi-Fi nearby.



Select the target Wi-Fi, click **"Save"**, then enter the Wi-Fi password.

Continue with the process by clicking **"Next"** to complete the Wi-Fi setup

**Cloud Service:** You can enable the **DDNS** Service and create your own personal Domain name in the DDNS alias field for remote accessing or sharing with others later on.

**Config :** Set up the Video Resolution, Compression Codec, and Maximum Frame Rate.

**F)** Click **"Finish"** to close this utility. Double click the camera in the Camera List for video live view streaming.

**Note:** Once you have finished the process, your device is now connected to Wi-Fi. **Please remove the Ethernet Cable for Wi-Fi usage.**

- B)** Select the target camera from the list.

	Model	Host name	IP	MAC	F/W Version
<input type="checkbox"/>	EDS110	EDS110_017	10.0.91.78	AA-BB-CC-DD-EFFF	1.0
<input checked="" type="checkbox"/>	EDS6255	EDS6255_017	10.0.91.3	AA-BB-CC-DD-EFFF	1.0
<input type="checkbox"/>	EDS110	EDS110_018	10.0.91.45	AA-BB-CC-DD-EFFF	1.0
<input type="checkbox"/>	EDS1130	EDS1130_018	10.0.91.1	AA-BB-CC-DD-EFFF	1.0

- C)** Enter the Username and Password of the camera . The default value of both username and password is **admin**.

Username

admin

Password

admin

- D)** Click on **Next >** to log in.

- E)** The wizard will guide you to complete the camera settings step by step.



**Network:** Set up IP Address, System Time, Wi-Fi, and Administrator settings including change of password for the camera.

**Note:** You can select **DHCP** mode for default setting, or select **Manual** mode to assign a fixed IP Address for the camera.

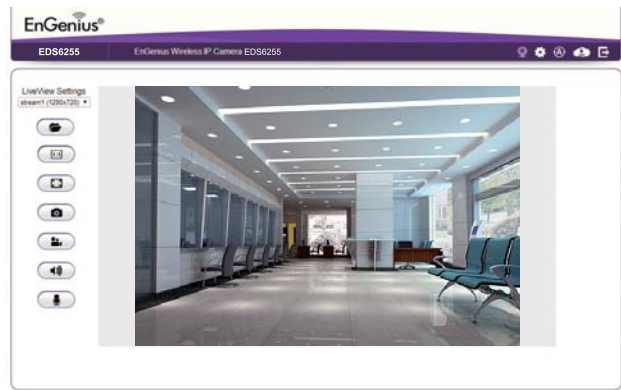
## 3 Access Live View

Please enter default username (**admin**) and password (**admin**) to access live view.



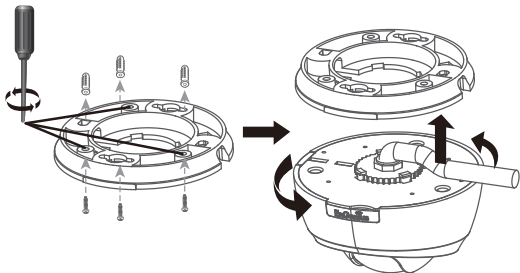
**Note:** You will be asked to download the **WebCMS** plug-in either for the first attempt or an updated version available.

You should now see the Live View streaming successfully.

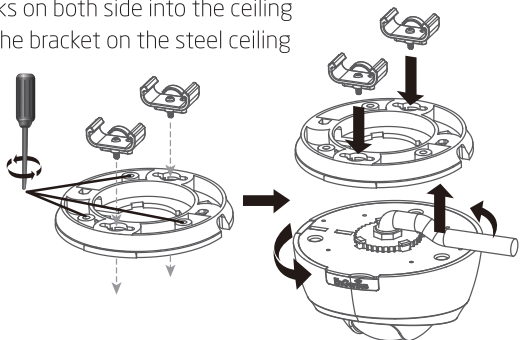


## 4 Mounting the Camera

- A)** Locate an area on the ceiling or wall. Make sure the area is capable of supporting the weight of camera.
- B)** Use the ceiling mount bracket screw slots to drill the mounting screws into the ceiling or wall.
- C)** Place the ceiling mount bracket on the camera and route the cable on the side of conduit entry tunnel. Twist the camera counterclockwise until it clicks into place.



- D)** For installing the camera on the ceiling light grid steel frame, screw in the hooks on both side into the ceiling mount bracket. Secure the bracket on the steel ceiling frame then twist in the camera firmly.



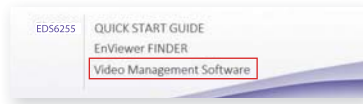
## 5 Setup EnGenius VMS

(the PC-based VMS, work with EnGenius IP Camera only)

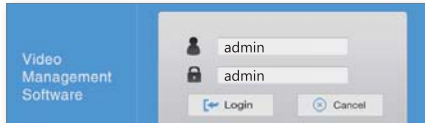
**EnGenius VMS** is a free bundle Video Management Software can support multiple cameras.

### How to run VMS and add camera(s)

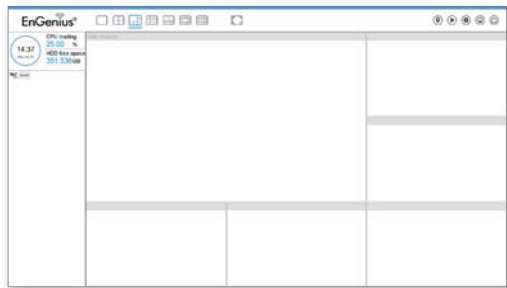
- A)** Select and run the VMS from the CD. Continue with the installation process.



The default value of username and password is **admin**.



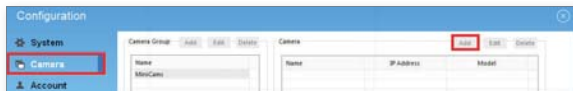
- B)** Run **EnGenius VMS** to execute live monitor.



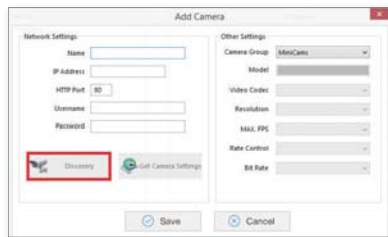
- C)** Go to **Configuration** and select camera to obtain the camera setting panel.



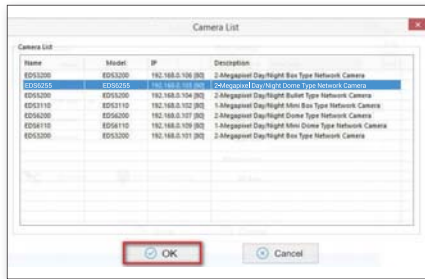
- D)** Go to Camera tab, and click **Add** on the top right side of the Camera page.



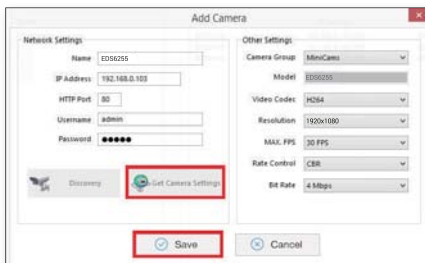
- E)** Click on **Discovery** to detect IP cameras under local area network (LAN).



- F)** Select one of the IP cameras that is available and click **OK**.



- G)** Enter the camera username & password and click **Get Camera Settings** to verify. Then click **Save** to add the camera and exit.

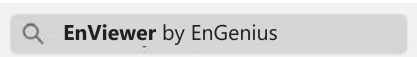


- H)** Repeat Step **D)** to **G)** until all desired cameras are added. You can now monitor all cameras in live view.

## EnViewer™ APP Setup

## Download EnViewer

Scan below QR code or download "**EnViewer by EnGenius**" APP from your mobile device.



Google Play  
for Android™ Devices



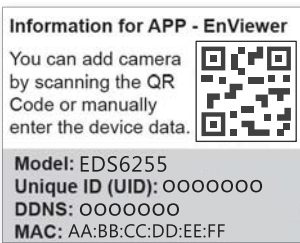
or

App Store  
for iPhone® and iPad®



## 1 Get Started

Find the EnViewer QR Code Label inside the box that is specifically for your camera and other advanced setting information.

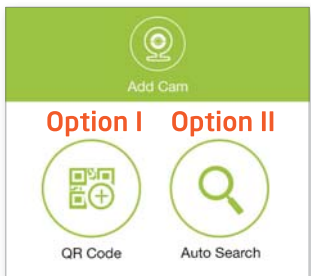


Prior to the usage of EnGenius Cloud Service, please ensure the following actions have been completed.

- A)** Camera device **DDNS** has been **enabled**.
- Note:** From the Web Management Page: **Network > EnGenius Cloud Service**
- B)** Camera device **UPnP** and **UPnP Traversal** are both **enabled**.
- C)** Network protocol **UPnP (Universal Plug and Play) Traversal** function has been **enabled** from your Internet Administrator or ISP (Internet Service Provider).

## 2 Setup Camera

Follow the EnViewer Wizard instruction, you will have two options to add camera.

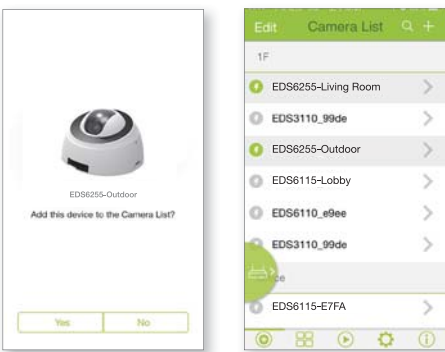


### Option I - Scan QR Code

- A)** Scan the **QR Code** with the provided label.



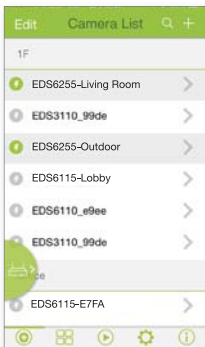
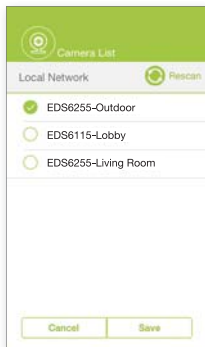
- B)** Click "**Yes**" to add the device in the Camera List.



### Option II - Auto Search

This option is recommended if you want to add multiple cameras within your local network at the same time.

- A)** Click on **Auto Search**.



- B)** All cameras within the local network will be listed. Select the device(s) you would like to add and click on **Save**.

## 3 Live View

Simply select the desired camera to access video live view.

