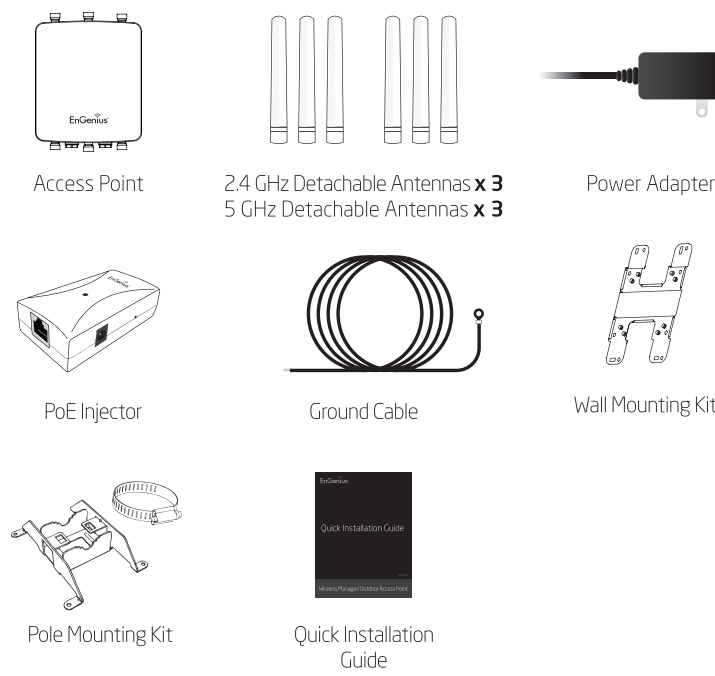


# Quick Installation Guide

version 1.0

## Wireless Managed Outdoor Access Point

## Package Contents



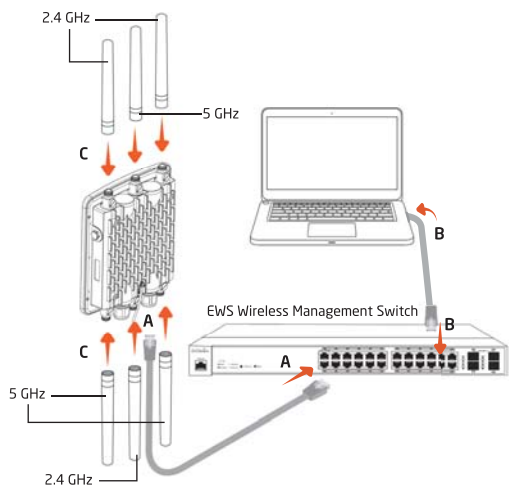
## Minimum Requirements

- Broadband Internet Service (Cable or DSL Modem)
- Internet Browser (Internet Explorer, Safari, Firefox, Chrome)

## Managed Access Point Installation with Wireless Management Switch

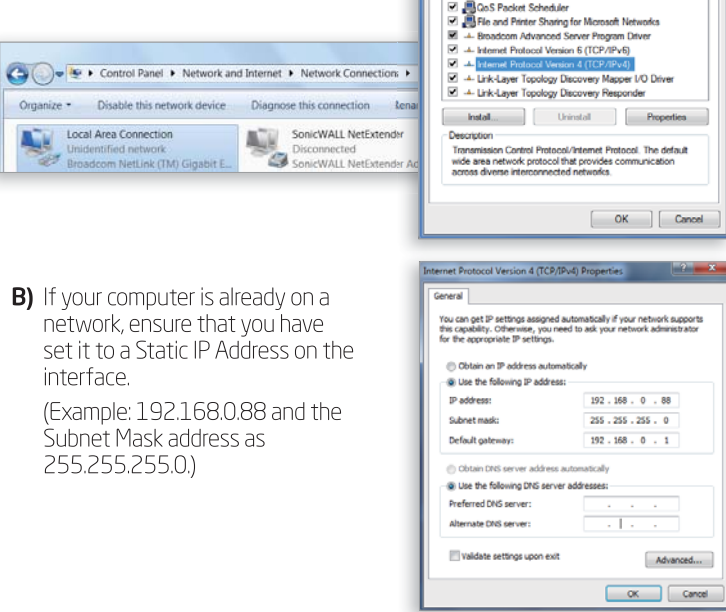
### 1 Connecting the Access Point (Through EnGenius Management Switch)

- A)** Connect one end of the Ethernet Cable into the main LAN Port (PoE) of the Managed Access Point and the other end to the Ethernet Port on the Wireless Management Switch.
- B)** Connect another Ethernet Cable into an Ethernet Port on the front panel of the EnGenius Wireless Management Switch and the other end to the Ethernet Port on the computer.
- C)** Screw on the provided antennas to the device as shown in illustration below.
- Note:** The Access Point supports both IEEE 802.3at PoE (Power over Ethernet) or the included power injector. You may use either one as the power source. **DO NOT** use both at the same time.



### 2 IP Address Configuration

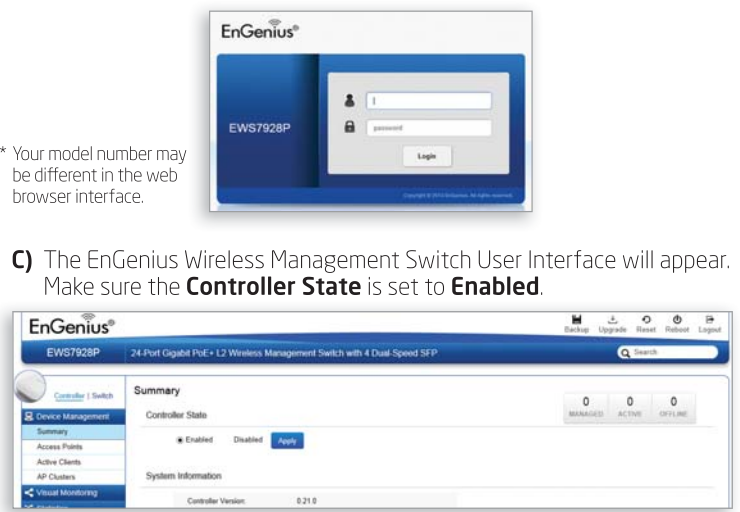
- A)** Once your computer is on, ensure that your TCP/IP is set to **On** or **Enabled**. Open Network Connections and then click **Local Area Connection**. Select **Internet Protocol Version 4 (TCP/IPv4)**.



- B)** If your computer is already on a network, ensure that you have set it to a Static IP Address on the interface.
- (Example: 192.168.0.88 and the Subnet Mask address as 255.255.255.0)

### 3 Management Switch Setup

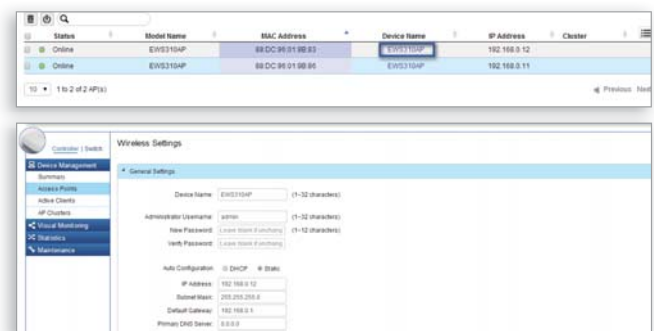
- A)** Open a web browser on your computer. In the address bar of the web browser, enter **192.168.0.239** and **enter**.
- B)** A login screen will appear. By default, username is **admin** and the password is **password**. Enter the current username and password of the Wireless Management Switch and then click **Login**.



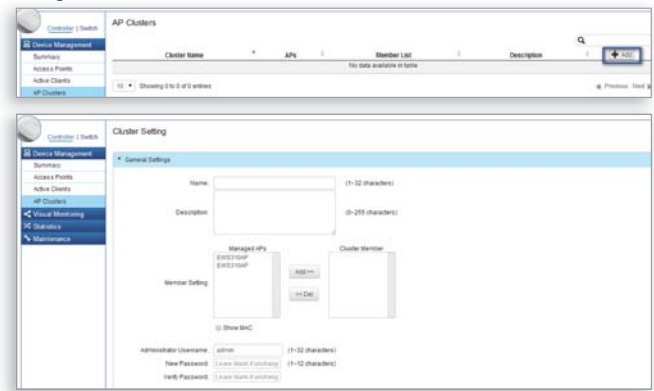
- \* Your model number may be different in the web browser interface.
- C)** The EnGenius Wireless Management Switch User Interface will appear. Make sure the **Controller State** is set to **Enabled**.

### 5 Configuring Managed AP (Through EnGenius Wireless Management Switch GUI)

- A)** Configure Managed AP(s) through the GUI interface from the switch for WLAN settings under **Device Management**. Click the "Device Name" in order to configure your Managed AP.



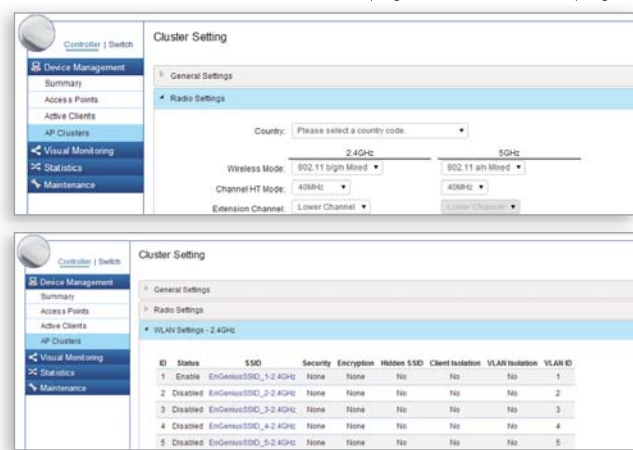
- B)** Add Managed AP(s) to specific **AP Cluster** to save repetitive configuration tasks.



- C)** Users may create several clusters simultaneously to accommodate their deployments under **AP Clusters**.



- D)** For distinct settings, EnGenius Wireless Management switches still offer individual Managed Access Point customization for cluster members such as different channels that best adapt your local WLAN deployments.

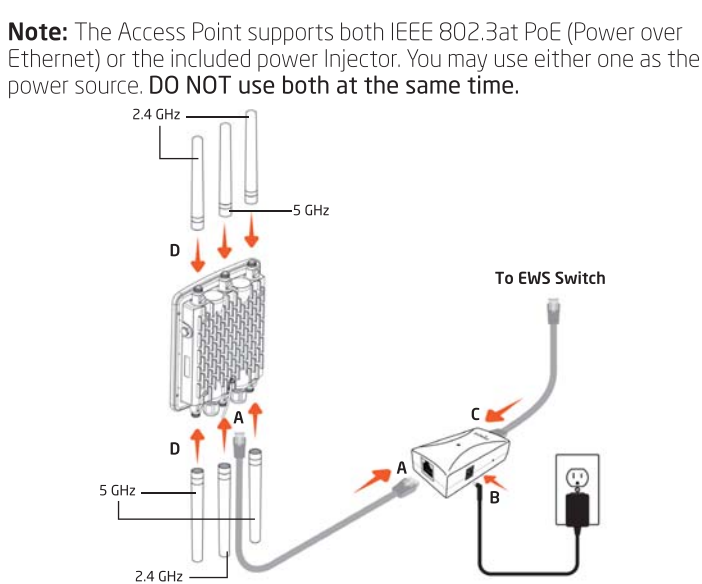


- E)** Upon successful connection and setup, user can go through different sections on the web management pages to unleash Managed AP's full features for your WLAN deployment and performance monitoring.

## Stand-alone Access Point Installation

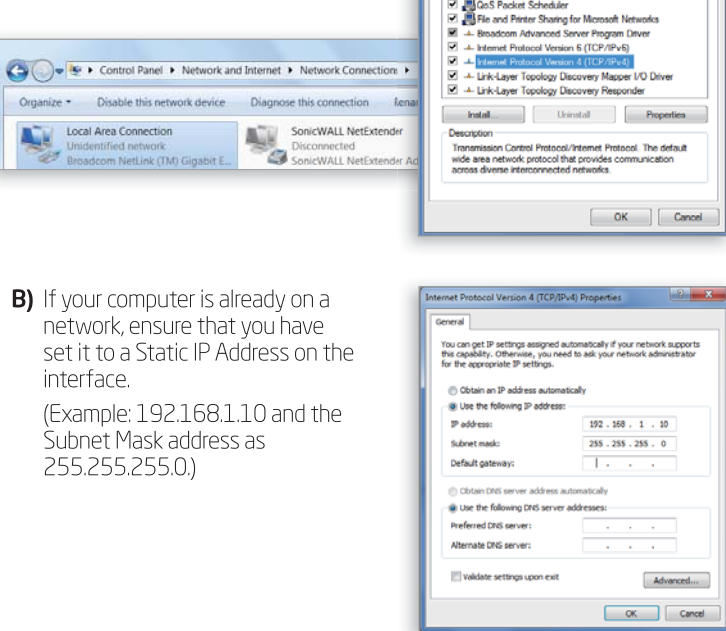
### 1 Connecting the Access Point

- A)** Connect one end of the Ethernet cable into the **main LAN port** (PoE) of the Access Point and the other end to the **AP Ethernet port** on the PoE injector.
- B)** Connect the **Power Adapter** to the **DC-IN port** of the PoE injector and plug the other end in to an electrical outlet.
- C)** Connect the second Ethernet cable into the **LAN port** of the PoE injector and the other end to the Ethernet port on the EWS Switch.
- D)** Screw on the provided antennas to the device as shown in illustration below.



### 2 IP Address Configuration

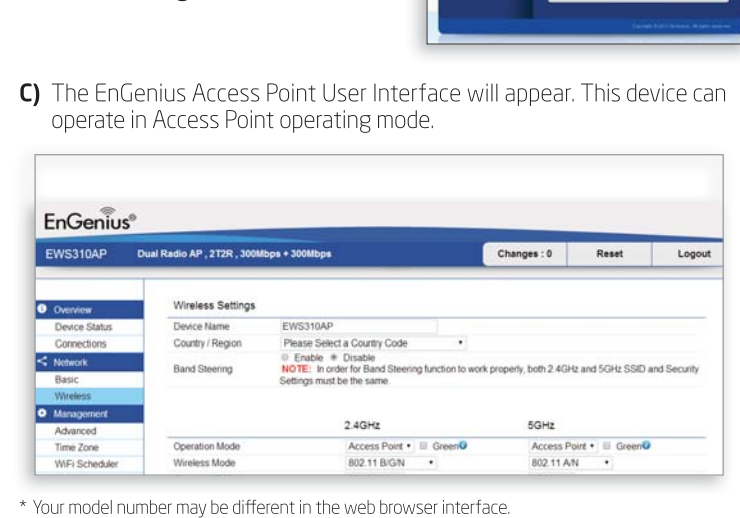
- A)** Once your computer is on, ensure that your TCP/IP is set to **On** or **Enabled**. Open Network Connections and then click **Local Area Connection**. Select **Internet Protocol Version 4 (TCP/IPv4)**.



- B)** If your computer is already on a network, ensure that you have set it to a Static IP Address on the interface.
- (Example: 192.168.1.10 and the Subnet Mask address as 255.255.255.0)

### 3 Access Point Setup

- A)** Open a web browser on your computer. In the address bar of the web browser, enter **192.168.1.1** and **enter**.
- B)** A login screen will appear. By default, the username of the Access Point is **admin** and the password is **admin**. Enter the current username and password of the Access Point and then click **Login**.

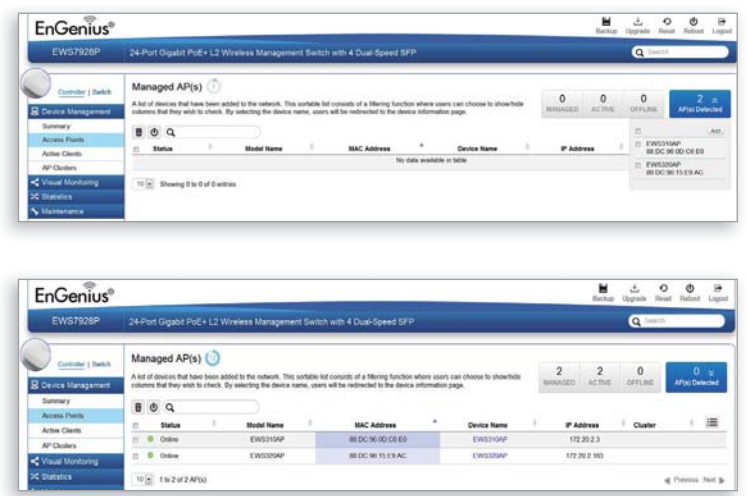


- C)** The EnGenius Access Point User Interface will appear. This device can operate in Access Point operating mode.

\* Your model number may be different in the web browser interface.

### 4 Adding Managed AP (Through EnGenius Wireless Management Switch GUI)

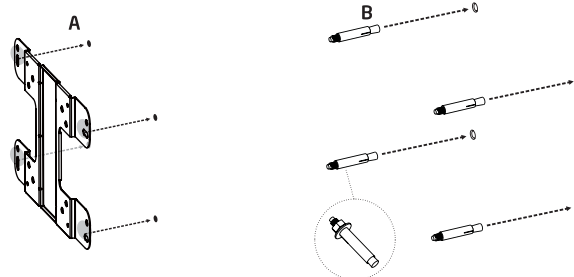
- A)** All Managed AP(s) connected to the same network as the Wireless Management Switch will appear on the right side of the screen, under the Access Point **AP(s) Detected** list. Locate and select the Managed AP by checking the box and click **Add** to manage the device.



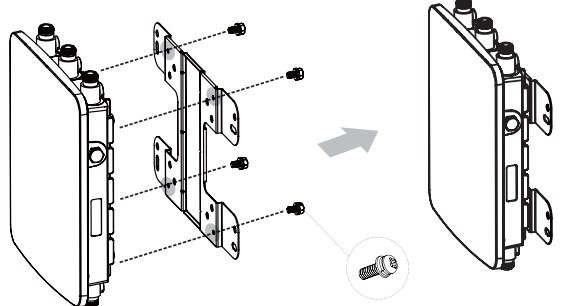
- B)** You may configure your Managed AP(s) after you successfully connected to the Wireless Management Switch through its **GUI**.

## Wall Mounting The AP

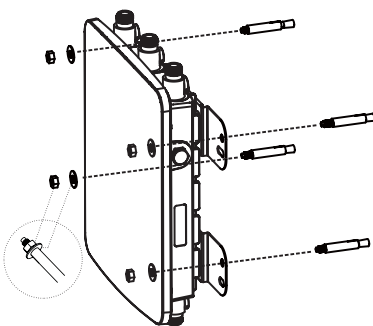
- A)** Determine where the AP is to be placed and mark location on the surface for the four mounting holes. You may adjust the position with a level.
- B)** Use the appropriate drill bit to drill four 8mm diameter and 37mm depth holes in the markings and hammer the bolts into the openings.



- C)** Place the lock and flat washer on the round head screws and drive the screws to attach mounting base to the back of the Access Point.

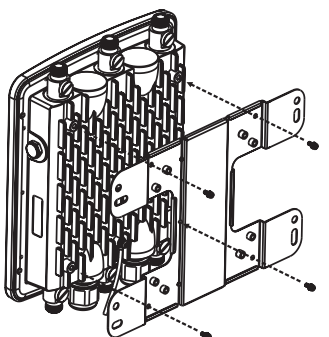


- D)** Attach the device onto the wall by tightening the bolt's flat washers and nuts to secure the mounting base to the mounting surface.

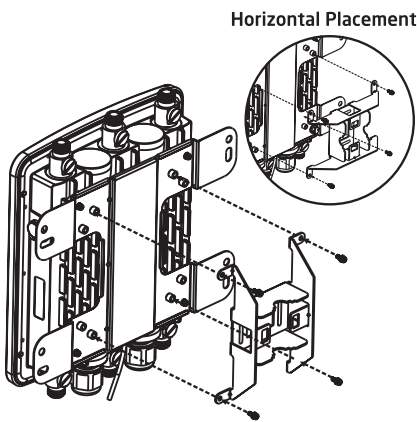


## Pole Mounting The AP

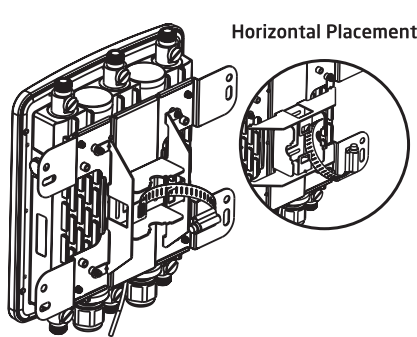
- A)** Place the lock and flat washer on the cap screws and drive the screws to attach the mounting base to the back of the Access Point.



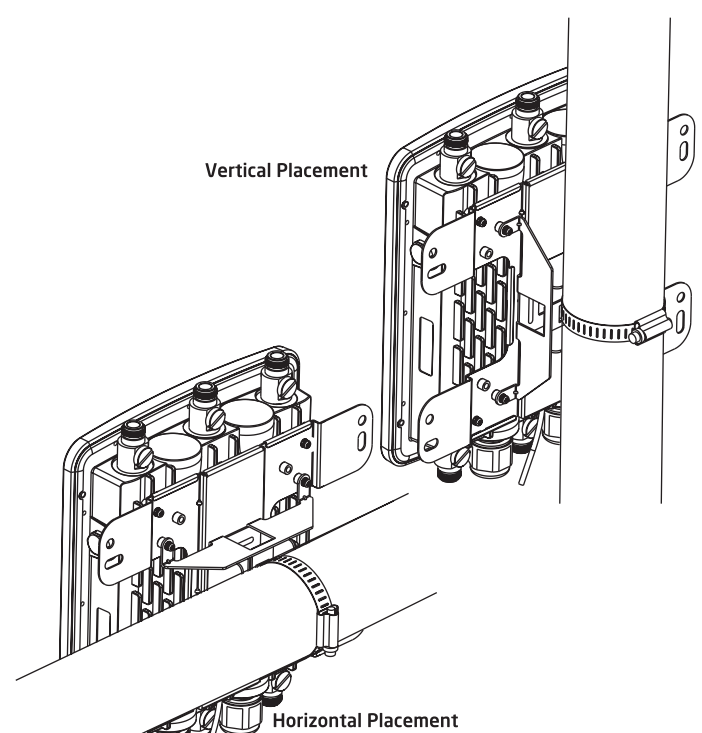
- B)** Determine which placement to be assembled. Drive the four round head screws to attach the Pole Mount Bracket to the mounting base.



- C)** Thread the open end of the Pole Strap through the two tabs on the Pole Mount Bracket.



- D)** Determine where the AP is to be fastened. Lock and tighten Pole Strap secure Pole Mount Bracket to the pole.



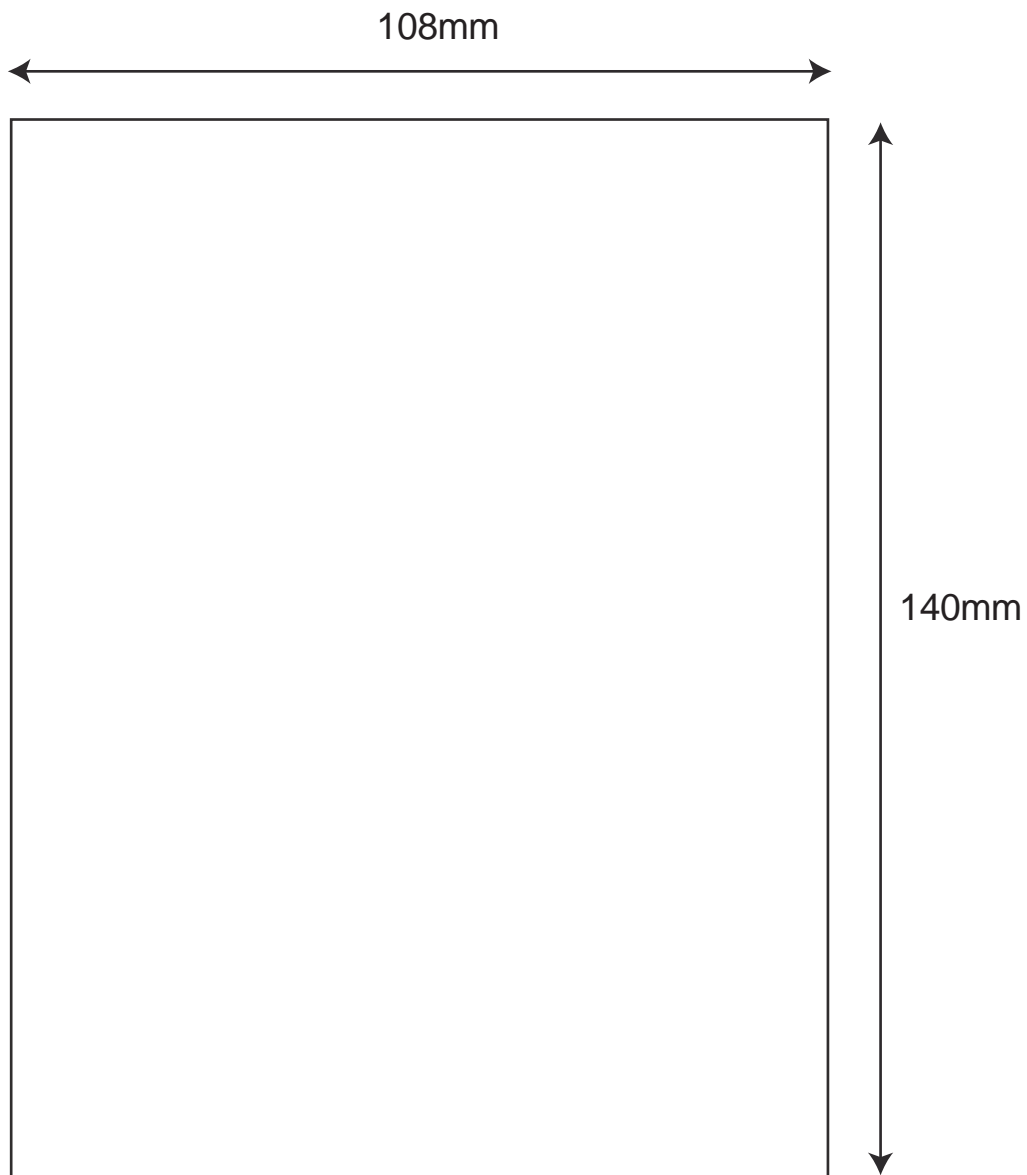
## Technical Support

Country of Purchase	Service Center	Service Information
<b>North America</b> www.engeniustech.com	<b>Canada</b>	rma@engeniustech.com Toll Free: (+1) 888 397 2788 Local: (+1) 905 940 8181
www.engeniustech.com	<b>Los Angeles, USA</b>	support1@engeniustech.com Toll Free: (+1) 888 735 7888 Local: (+1) 714 432 8668
<b>Central &amp; South America</b> es.engeniustech.com pg.engeniustech.com	<b>Miami, USA</b>	miamisupport@engeniustech.com Miami: (+1) 305 887 7378 Sao Paulo, Brazil: (+55) 11 3957 0303 D.F. Mexico: (+52) 55 1163 8894
<b>Europe</b> www.engeniustech.com	<b>Netherlands</b>	support1@engeniustech.com (+31) 40 8200 887
<b>Africa</b> <b>CIS</b> <b>Middle East</b> <b>Russia</b> www.engeniustech.com	<b>Dubai, UAE</b>	support1@engeniustech.com Toll Free: UAE: 800-EnGenius 800-364-364-97 General: (+971) 4 357 5599
<b>Asia</b> <b>Oceania</b> www.engeniustech.com	<b>Singapore</b>	www.engeniustech.com.sg/e_warranty_form techsupport@engeniustech.com.sg Toll Free: Singapore: 1800 364 3648
<b>Others</b> www.engeniustech.com	<b>Taiwan, R.O.C</b>	technology@sena.com

## Notes

Maximum data rates are based on draft IEEE 802.11ac and/or IEEE 802.11 standards. Actual throughput and range may vary depending on many factors including environmental conditions, distance between devices, radio interference in the operating environment, and mix of devices in the network. Features and specifications subject to change without notice. This device complies with Part 15 of the FCC Rules. Operation is subject to the following two conditions: (1) this device may not cause harmful interference, and (2) this device must accept any interference received, including interference that may cause undesired operation. Trademarks and registered trademarks are the property of their respective owners. For United States of America: Copyright ©2013 EnGenius Technologies, Inc. All rights reserved.



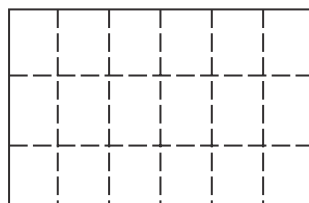


Dimension: 成型尺寸108\*140mm

Material: 80P模造紙

Ink: Black

折法:



部門	外觀設計課			料號	6709A2463070			
日期	2014/07/08	比例	1/1		單位	mm	工業設計工程師	Mandy
該專案經理人或業務之內容核准			Joe		檢圖	Rennier	機構設計工程師	Austin