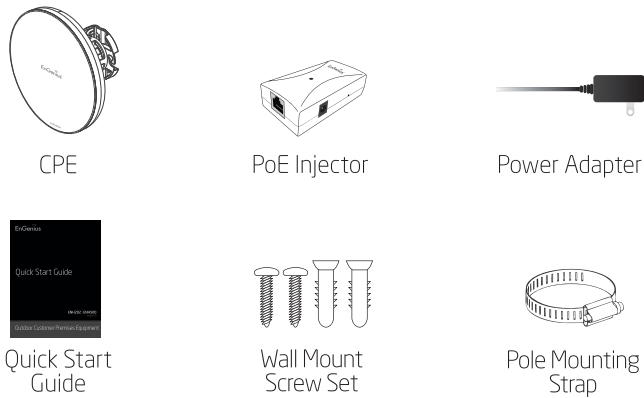


Quick Installation Guide

EnStation2 | EnStation5
version 1.0

Outdoor Customer Premises Equipment

Package Contents



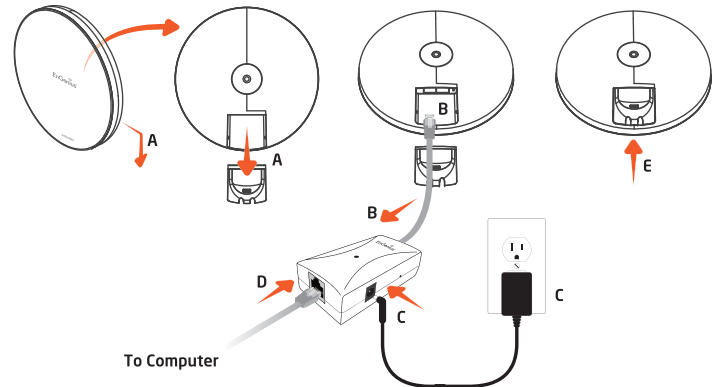
Minimum Requirements

- + Broadband Internet Service (Cable or DSL Modem)
- + Internet Browser (Internet Explorer, Safari, Firefox, Chrome)

1 Connecting the CPE

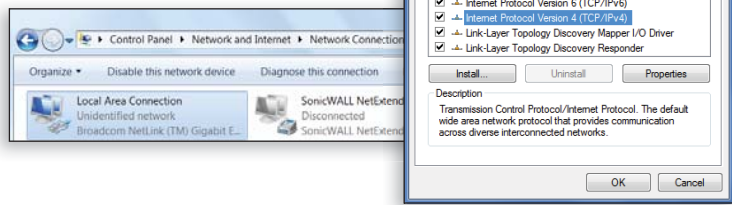
- Remove the rear bottom panel.
- Connect one end of the Ethernet cable into the LAN(PoE) port of the CPE and the other end to the PoE Ethernet port on the PoE injector.
- Connect the Power Adapter to the DC-IN port of the CPE and plug the other end into an electrical outlet.
- Connect the second Ethernet cable into the LAN port of the PoE injector and the other end to the Ethernet port on the computer.
- Place the panel removed from step A back into the device.

Note: The CPE should ONLY be powered via Ethernet cable connected to the included PoE Injector.



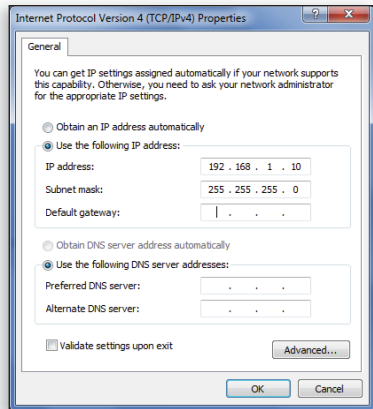
2 IP Address Configuration

- Once your computer is on, ensure that your TCP/IP is set to **On** or **Enabled**. Open **Network Connections** and then click **Local Area Connection**. Select **Internet Protocol Version 4 (TCP/IPv4)**.



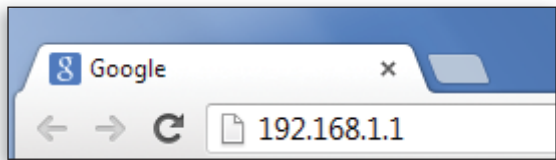
- If your Computer is already on a network, ensure that you have set it to a Static IP Address on the interface.

(Example: 192.168.1.10 and the Subnet Mask address as 255.255.255.0.

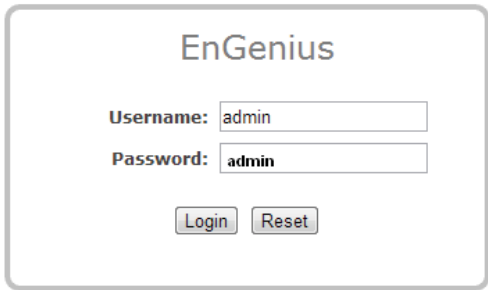


3 CPE Setup

- To configure the CPE, open a web browser. In the address bar of the web browser, enter **192.168.1.1** and hit enter.

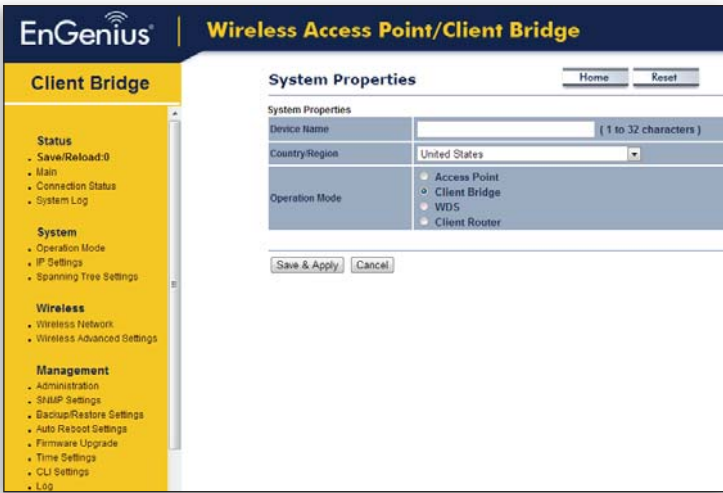


- A login screen will appear. By default, the username of the CPE is **admin** and the password is **admin**. Enter the current username and password of the CPE and then click **Login**.



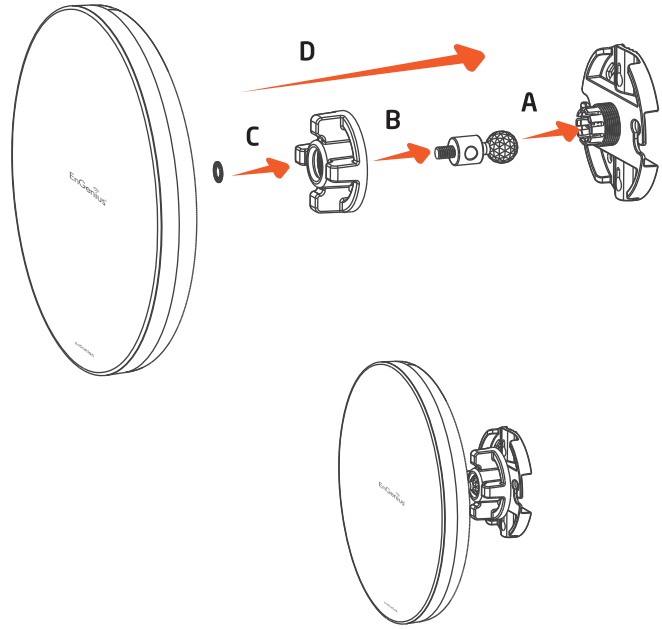
4 Switching Modes

- This device can operate in the following modes: Access Point, Client Bridge, WDS and Client Router.
- Click on the **Operation Mode** link under the **System Properties**.

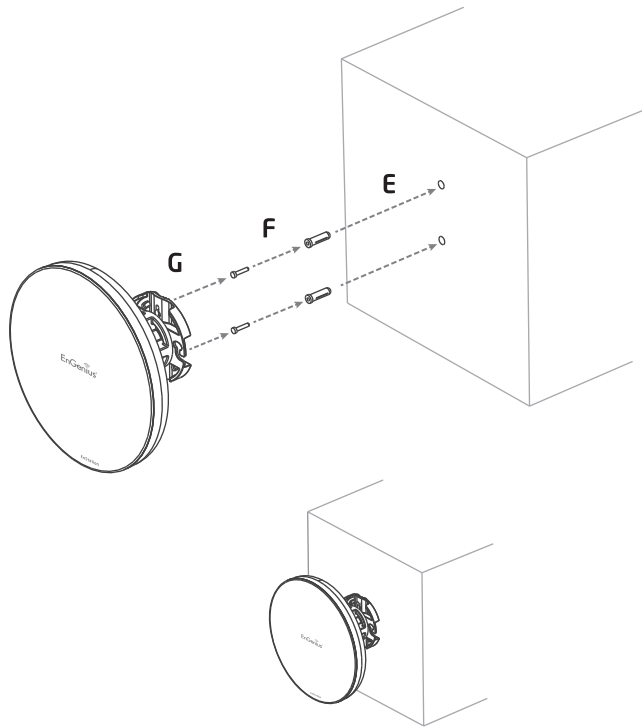


Wall Mounting the CPE

- Plug the dynamic stick into the bracket firstly.
- Combine the sealing nut and combined kit, as well as tighten it
- Put the nock washer on dynamic stick.
- Assemble the mounting kit with the CPE

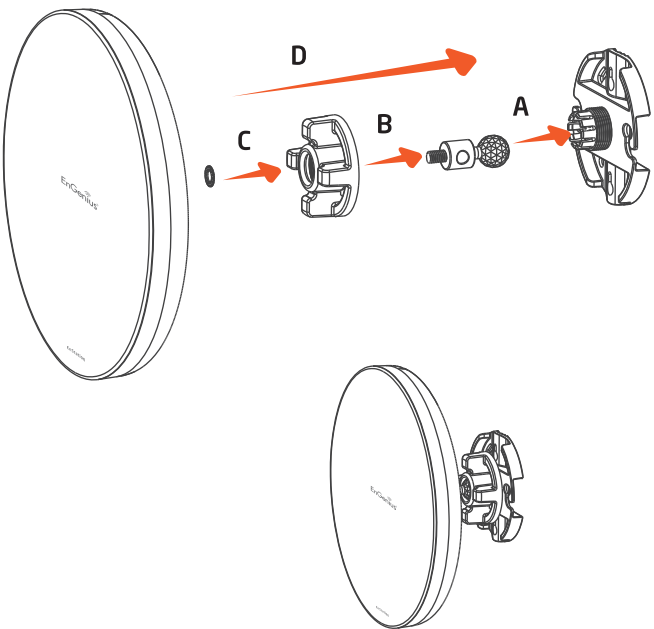


- Drill the hole to input the mounting screws
- Use the included screws to input into the mounting screws
- Let the hole of the bracket to aim at the screws on the wall and hang the device to fix it.

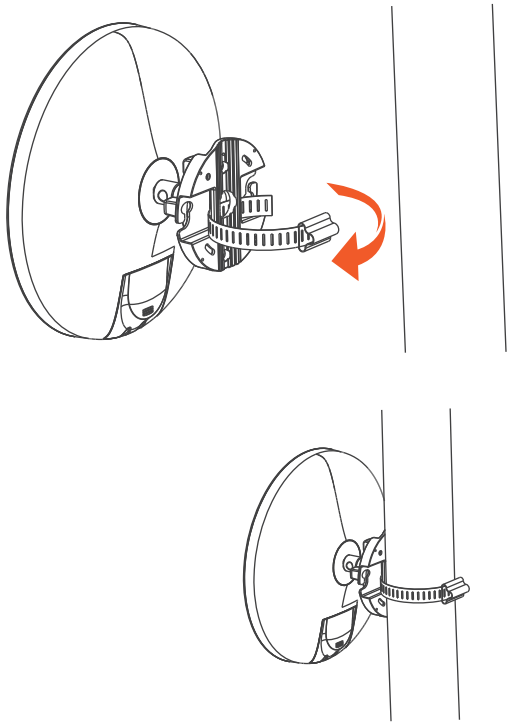


Pole Mounting the CPE

- Plug the dynamic stick into the bracket firstly.
- Combine the sealing nut and combined kit, as well as tighten it
- Put the nock washer on dynamic stick.
- Assemble the mounting kit with the CPE



- Thread the open end of the pole strap through the two tabs on the bracket.
- Lock and tighten pole strap to secure bracket to the pole.



Technical Support

| Country of Purchase | Service Center | Service Information |
|--|-------------------------|---|
| North America www.engeniustech.com | Canada | rma@engeniustech.com Toll Free: (+1) 888 397 2788 Local: (+1) 905 940 8181 |
| www.engeniustech.com | Los Angeles, USA | support@engeniustech.com Toll Free: (+1) 888 735 7888 Local: (+1) 714 432 8668 |
| Central & South America es.engeniustech.com pg.engeniustech.com | Miami, USA | miamisupport@engeniustech.com Miami: (+1) 305 887 7378 Sao Paulo, Brazil: (+55) 11 3957 0303 D.F. Mexico: (+52) 55 1163 8894 |
| Europe www.enginiustech.com | Netherlands | support@engeniustech.com (+31) 40 8200 887 |
| Africa CIS Middle East Russia www.engeniustech.com | Dubai, UAE | support@engeniustech.com Toll Free: UAE: 800-EnGenius 800-364-364-87 General: (+971) 4 357 5599 |
| Asia Oceania www.engeniustech.com.sg | Singapore | www.engeniustech.com.sg/e_warranty_form techsupport@engeniustech.com.sg Toll Free: Singapore: 1800 364 3648 |
| Others www.enginiustech.com | Taiwan, R.O.C. | technology@senao.com |

Notes

Maximum data rates are based on IEEE 802.11 standards. Actual throughput and range may vary depending on many factors including environmental conditions, distance between devices, radio interference in the operating environment, and mix of devices in the network. Features and specifications subject to change without notice. Trademarks and registered trademarks are the property of their respective owners. For United States of America: Copyright © 2013 EnGenius Technologies, Inc. All rights reserved.