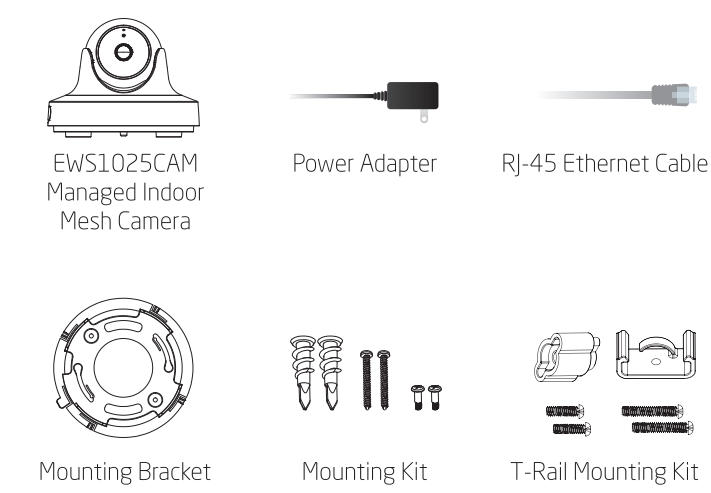


Quick Installation Guide

EWS Series Mesh Camera
version 1.0

Wireless Managed Indoor Mesh Camera

Package Contents



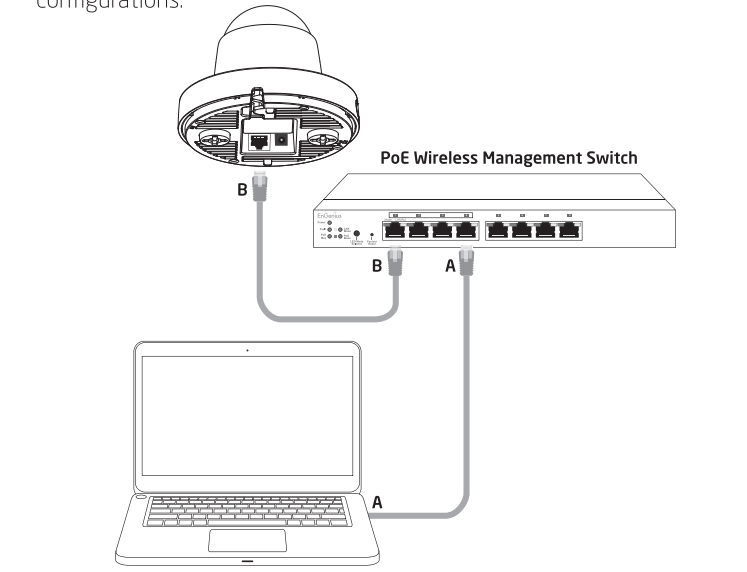
Minimum Requirements

- Broadband Internet Service (Cable or DSL Modem)
- Internet Browser (Internet Explorer, Safari, Firefox, Chrome)
- EnGenius Wireless Management L2 Switch (To use with EWS Series Management Switches)

Managed Access Point Installation with Wireless Management Switch

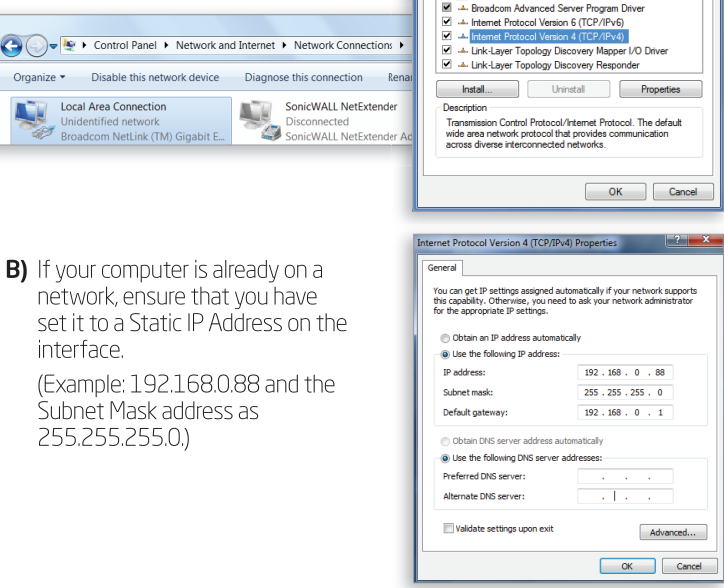
1 Connecting the Mesh Camera (Through EnGenius Wireless Management Switch)

- A) Connect one end of the **Ethernet Cable** into an **Ethernet Port** on the front panel of the EnGenius Wireless Management Switch and the other end to the Ethernet Port on the computer.
- B) Connect another **Ethernet Cable** into the **Ethernet Port** of the Managed Mesh Camera and the other end to the **Ethernet Port** on the Wireless Management Switch. With the Wireless Management Switches, the Managed Mesh Camera is able to obtain proper assigned IP address for further configurations.



2 IP Address Configuration

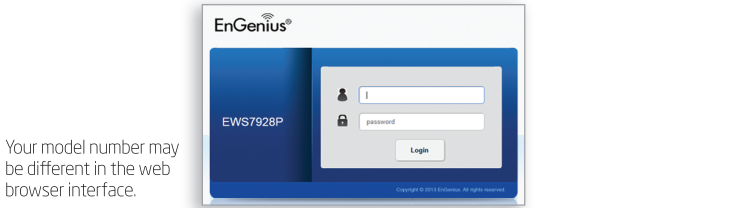
- A) Once your computer is on, ensure that your TCP/IP is set to **On** or **Enabled**. Open Network Connections and then click **Local Area Connection**. Select **Internet Protocol Version 4 (TCP/IPv4)**.



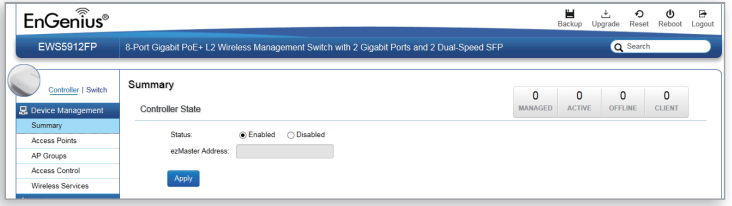
- B) If your computer is already on a network, ensure that you have set it to a Static IP Address on the interface.
(Example: 192.168.0.88 and the Subnet Mask address as 255.255.255.0.)

3 Management Switch Setup

- A) Open a web browser on your computer. In the address bar of the web browser, enter **192.168.0.239** and **enter**.
- B) A login screen will appear. By default, username is **admin** and the password is **password**. Enter the current username and password of the Wireless Management Switch and then click **Login**.

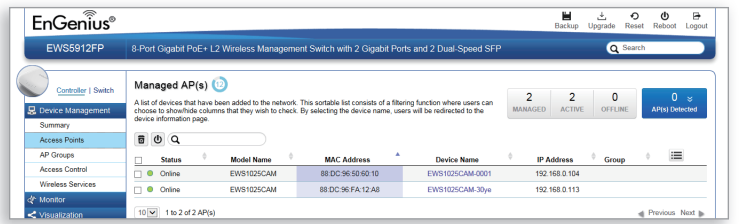
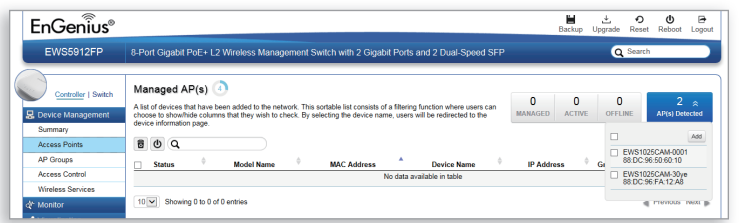


- * Your model number may be different in the web browser interface.
- C) The EnGenius Wireless Management Switch User Interface will appear. Make sure the **Controller State** is set to **Enabled**.



4 Adding Managed Mesh Camera (Through EnGenius Wireless Management Switch GUI)

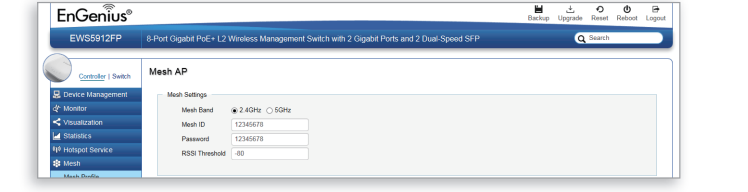
- A) All Managed Mesh Camera(s) connected to the same network as the Wireless Management Switch will appear on the right side of the screen, under the **Access Point AP(s) Detected** list. Locate and select the Managed Mesh Camera by checking the box and click Add to manage the device.



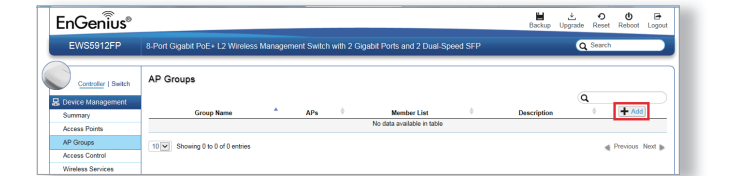
- B) You may configure your Managed Mesh Camera(s) after you successfully connected to the Wireless Management Switch through its **GUI**.

5 How to Setup Mesh Network (Through EnGenius Wireless Management Switch GUI)

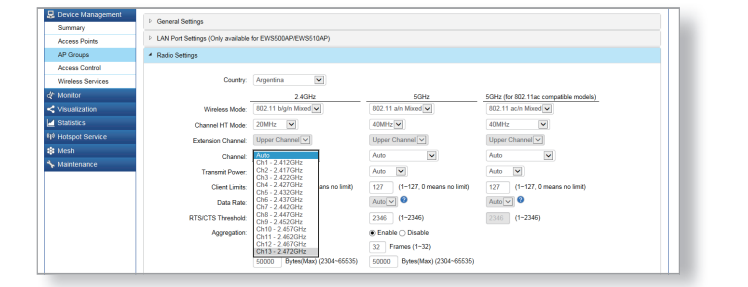
- A) Setup the Mesh profile for mesh devices includes 2.4GHz mesh or 5GHz mesh, Mesh ID, Mesh Password and Mesh RSSI.



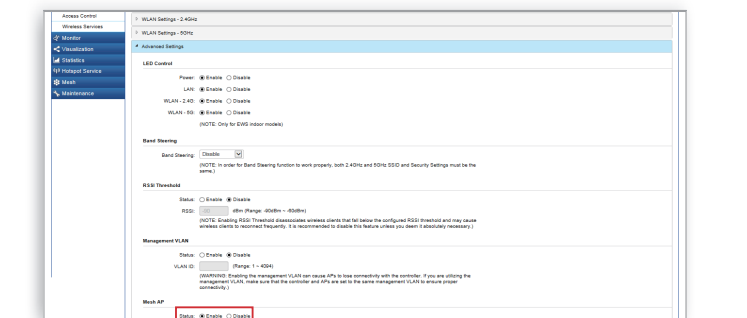
- B) Add Managed Mesh Camera(s) to specific **AP Group** to save repetitive configuration tasks.



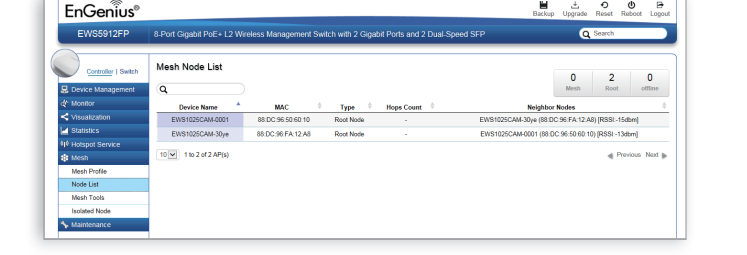
- C) Setup the channel of Mesh Radio (Cannot be Auto)



- D) Enable Mesh AP, then click **Apply**.



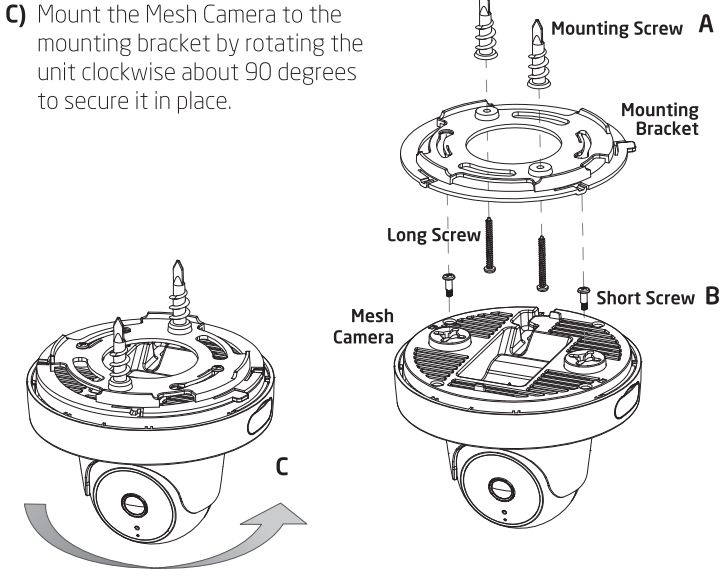
- E) Upon successful connection and setup, user can go through different sections on the Mesh management page for the detail information.



Mounting the Mesh Camera

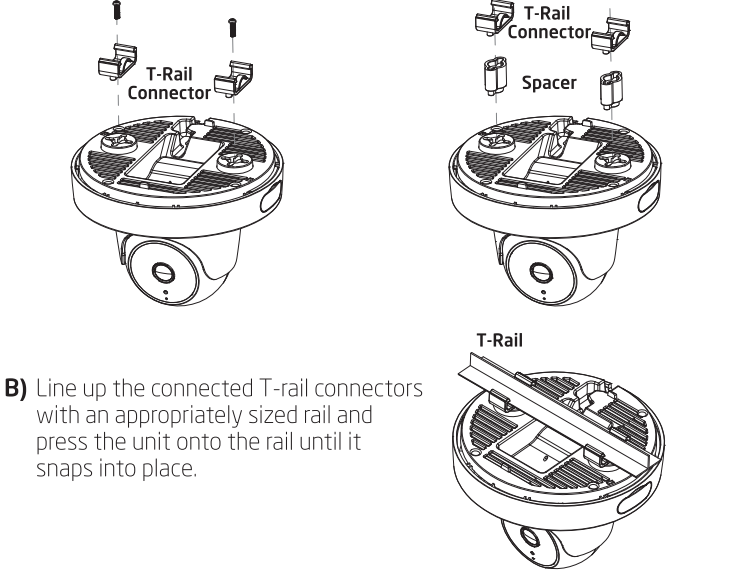
To attach the Mesh Camera to a ceiling using the mounting bracket:

- A) Attach the mounting bracket to the ceiling using the provided mounting kit.
- B) Insert the provided short screws into the mounting holes. Make sure there's enough space between the screws and unit for the mounting bracket. If extra space is required, use the provided spacers and long screws from the T-Rail mounting kit.



To attach the Mesh Camera to a ceiling using T-Rail connectors:

- A) Attach the T-rail connectors to the bottom cover of the Mesh Camera using the provided short screws. Use appropriate size T-rail connectors (1.5/16" or 9/16"). If extra space is required to accommodate drop ceiling tiles, use the provided spacers and long screws.



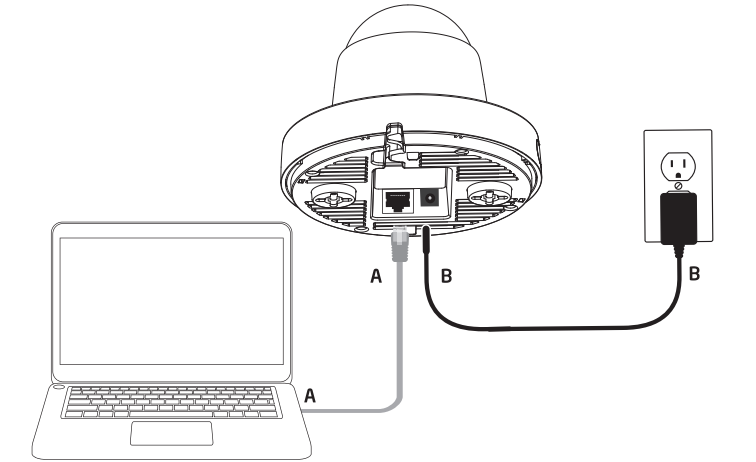
Note: To protect your Mesh Camera, use the Kensington security slot to attach a cable lock (cable lock is not included).

Stand-alone Mesh Camera Installation

1 Connecting the Mesh Camera

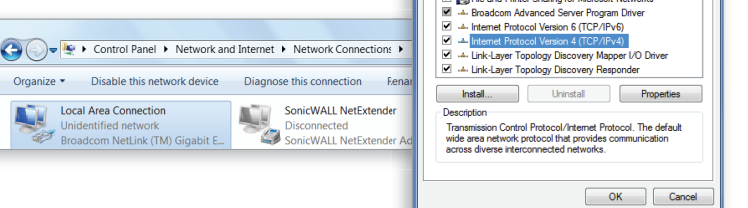
- A) Connect one end of the **Ethernet cable** into the **Ethernet port** of the Mesh Camera and the other end to the **Ethernet port** on the computer.
- B) Connect the **Power Adapter** to the **DC-IN port** of the Mesh Camera and plug the other end into an electrical outlet.

Note: The Mesh Camera supports both IEEE 802.3af PoE (Power over Ethernet) or the included power adapter. You may use either one as the power source. **DO NOT use both at the same time.**

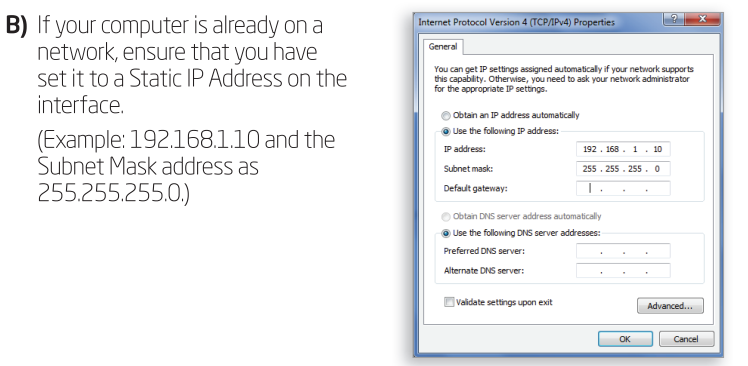


2 IP Address Configuration

- A) Once your computer is on, ensure that your TCP/IP is set to **On** or **Enabled**. Open Network Connections and then click **Local Area Connection**. Select **Internet Protocol Version 4 (TCP/IPv4)**.

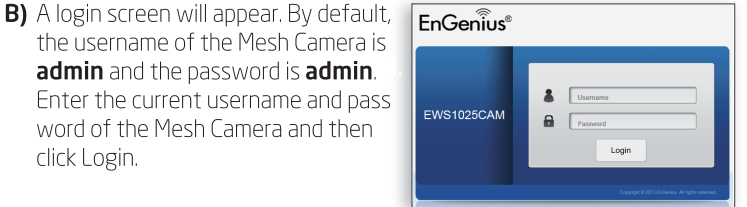


- B) If your computer is already on a network, ensure that you have set it to a Static IP Address on the interface.
(Example: 192.168.1.10 and the Subnet Mask address as 255.255.255.0.)

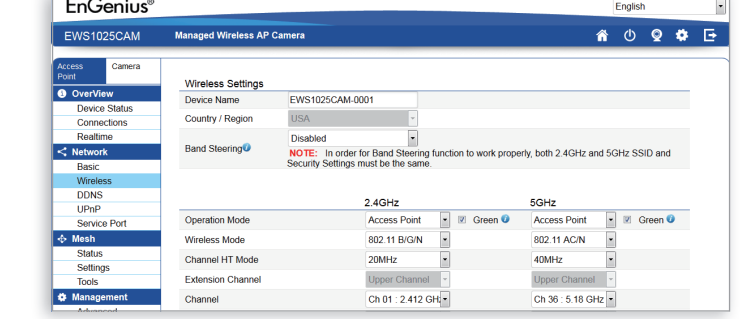


3 Mesh Camera Setup

- A) Open a web browser on your computer. In the address bar of the web browser, enter **192.168.1.200** and **enter**.

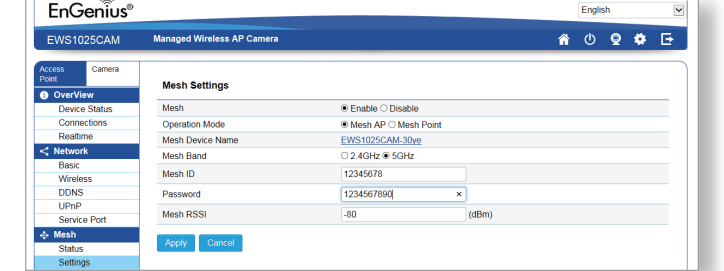


- B) A login screen will appear. By default, the username of the Mesh Camera is **admin** and the password is **admin**. Enter the current username and password of the Mesh Camera and then click **Login**.

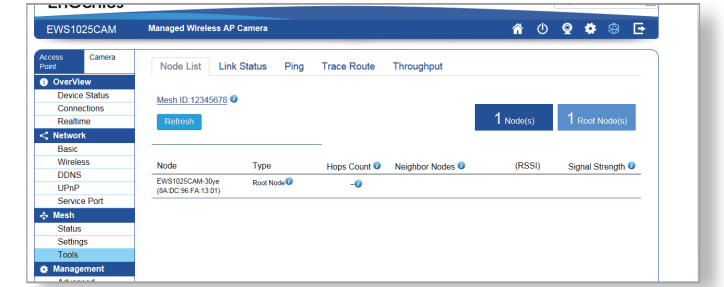


4 How to Setup Mesh Network

- A) Setup the same parameters of Mesh profile for each Mesh device in the mesh network.



- B) Upon successful connection and setup, user can go through different sections on the Mesh management page for the detail information.



Technical Support

Country of Purchase	Service Center	Service Information
North America www.engeniustech.com	Canada	mia@engeniustech.com Toll Free: (+1) 888 397 2788 Local: (+1) 905 940 8181
www.engeniustech.com	Los Angeles, USA	support@engeniustech.com Toll Free: (+1) 888 735 7888 Local: (+1) 714 432 8668
Central & South America es.engeniustech.com pe.engeniustech.com	Miami, USA	miamisupport@engeniustech.com Miami: (+1) 305 887 7378 Sao Paulo, Brazil: (+55) 11 3957 0303 D.F. Mexico: (+52) 55 1163 8894
Europe www.engeniustech.com	Netherlands	support@engeniustech.com (+31) 40 8200 887
Africa CIS Middle East Russia www.engeniustech.com	Dubai, UAE	support@engeniustech.com Toll Free: U.A.E. 800-EnGenius 800-364-364-87 General: (+971) 4 357 5599
Asia Oceania www.engeniustech.com.sg	Singapore	www.engeniustech.com.sg/le_warranty_form techsupport@engeniustech.com.sg Toll Free: Singapore: 1800 364 3648
Others www.engeniustech.com	Taiwan, R.O.C	technology@senao.com

Notes

Maximum data rates are based on draft IEEE 802.11ac and/or IEEE 802.11 standards. Actual throughput and range may vary depending on many factors including environmental conditions, distance between devices, radio interference in the operating environment, and mix of devices in the network. Features and specifications subject to change without notice. This device complies with Part 15 of the FCC Rules. Operation is subject to the following two conditions: (1) this device may not cause harmful interference, and (2) this device must accept any interference received, including interference that may cause undesired operation. Trademarks and registered trademarks are the property of their respective owners. For United States of America: Copyright ©2017 EnGenius Technologies, Inc. All rights reserved.