

EnGenius VMS Application

Setup EnGenius VMS

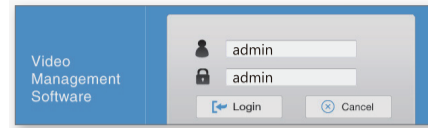
(the PC-based VMS, work with EnGenius IP Camera only)

EnGenius VMS is a free bundle Video Management Software can support multiple cameras.

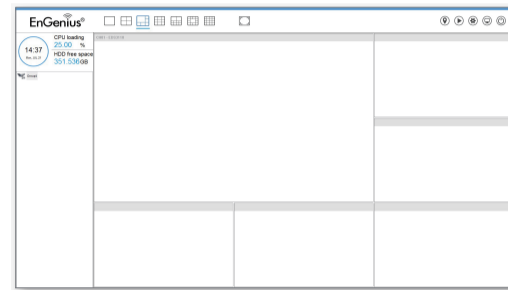
How to run VMS and add camera(s)

- A) Download the VMS software from EnGenius website:
<http://www.engeniustechnologies.com/product/product.php?c=15&s=59&p=238>
 continue with the installation process.

The default value of username and password is **admin**.



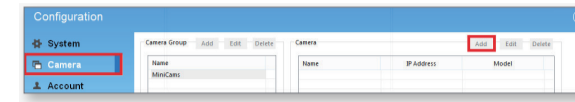
- B) Run EnGenius VMS to execute Live Monitor.



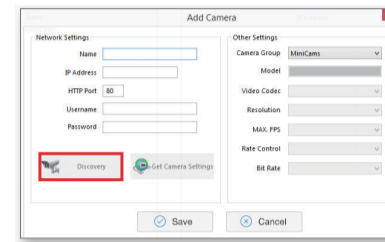
- C) Go to **Configuration** and select camera to obtain the camera setting panel.



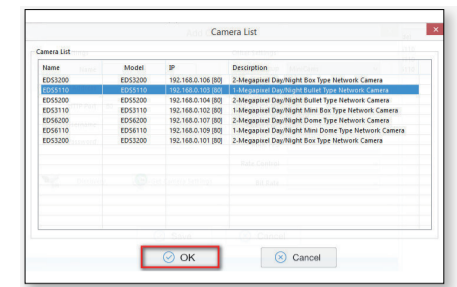
- D) Go to Camera tab, and click **Add** on the top right side of the Camera page.



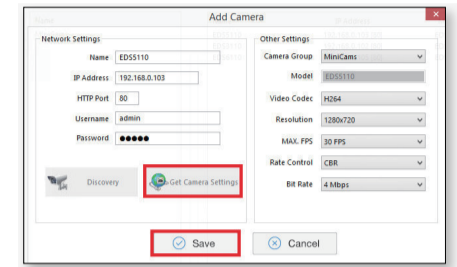
- E) Click on **Discovery** to detect IP cameras under local area network (LAN).



- F) Select one of the IP cameras that is available and click **OK**.



- G) Enter the camera username & password and click **Get Camera Settings** to verify. Then click **Save** to add the camera and exit.



- H) Repeat Step D) to G) until all desired cameras are added. You can now monitor all cameras in live view.

1 Get Started

Find and download the **EnVMS APPs** from Apple Store for iOS, or Google Play for Android devices.

2 Setup Camera

You will have two options to add camera.

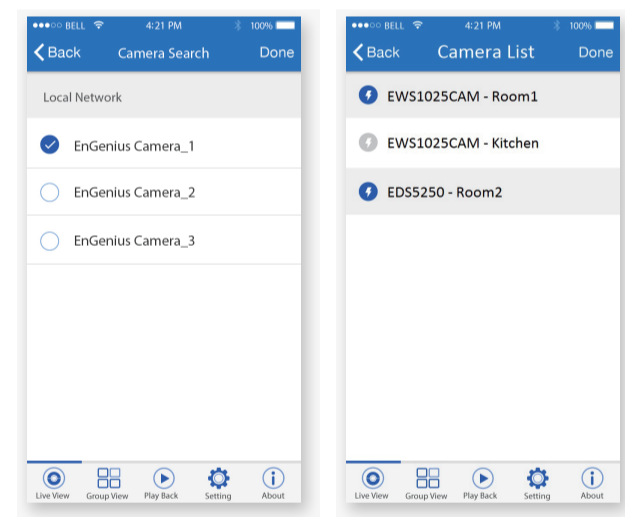
Option I: Local Network - Auto Discovery

Option II: Manually Configuration

Option I - Auto Discovery

This option is recommended if you want to add multiple cameras within your local network at the same time.

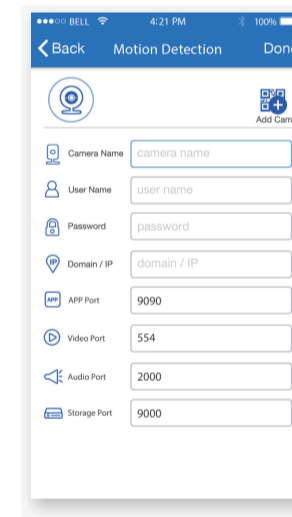
- A) Click on **Auto Discovery**.
- B) All cameras within the local network will be listed. Select the device(s) you would like to add and click on **Save**.



Option II - Manually configuration

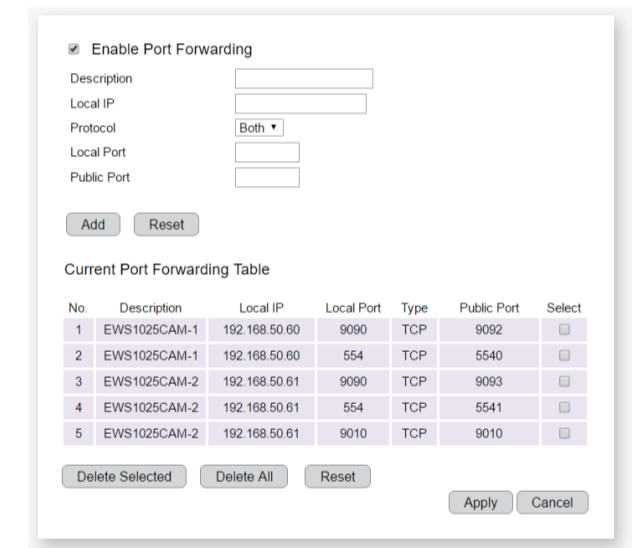
This option is recommended if you want to add camera from remote site for remote live view.

- A) Click on **Add Camera**.
- B) Setup the device information and service ports for the Camera.



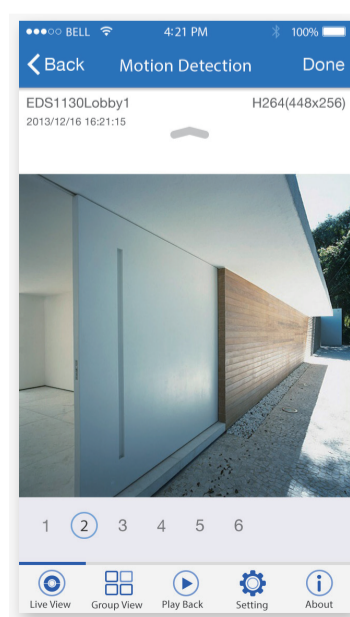
- C) Configure the **Port Forwarding** rule in Your Router or Firewall.

Note: The Port Forwarding rule must in different setting interface to Routers or Firewalls, please make sure all the ports are mapping with the same parameters of mobile APPs.



3 Live View

Simply select the desired camera to access video live view.



EnGenius Technologies Inc. All rights reserved. Information provided on the compatibility list is for reference only and subject to change without notice. All APPs, VMS and NVR have been tested in a single application or test environment and may not reflect absolute values for all cases. EnGenius is not responsible for incompatibility cases. In no event shall EnGenius intervene in any transaction between user and any third party nor take any responsibility and liability thereof. Please check below for details on compatible and recommended devices.

ONVIF Mobile APPs

No.	Android	APPs Name	Provider Profile	Local Search	Local Live View	Remote Live View
1		Onvif	Biye SciTech Inc. http://www.biye.net	✓	✓	✓
2		IPCAM Viewer Basic	Robert Chou robert.chou@gmail.com	✓	✓	✓
3		TinyCam FREE	Tiny Solutions LLC http://tinysolutionsllc.com	✓	✓	✓
4		IPCAM Viewer Lite	Robert Chou robert.chou@gmail.com	✓	✓	✓
5		Net Eye Camera	Safe 500 app.sup.android@gmail.com	✓	✓	✓
7		OnvifClient	Happy timesoft http://www.happytimesoft.com	✓	✓	✓
8		IPCam Soft Lite	IPCamSoft http://ipcamsoft.com	✓	✓	✓
9		FetchCam	Big8Bits app.sup.android@gmail.com	✓	✓	✓

No.	iOS	APPs Name	Company Profile	Local Search	Local Live View	Remote Live View
1		IP Cam Viewer Lite	Robert Chou robert.chou@gmail.com	✓	✓	✓
2		IP Cam Soft free	IPCamSoft http://ipcamsoft.com	✓	✓	✓

All brands and trademarks mentioned within this documentation presence and possibly protected by third parties shall be unlimitedly subject to the provisions of the currently valid trademark legislation and the ownership rights of the respectively registered owner.

ONVIF Video Management System

No.	VMS	Model Name	Company Profile	Software Version
1	Milestone	XProtect Essential	https://www.milestonesys.com	2016 R3
2	Exacq	ExacqVision8	https://www.exacq.com/index.php	8.0.3.103130
3	AxonSoft	Next 4.0	http://www.axonsoft.com	SW Version: 4.0.0.2925

ONVIF Network Video Recorder

No.	NVR	Model Name	Company Profile	Software Version
1	Hikvision	DS-7708N-E4	http://overseas.hikvision.com/en/index.html	3.0.8.build140825
2	NUUONVR Solo	NS-1040	http://www.nuuo.com	02.01.0000.0141
3	AVTECH	AVH 516A	http://www.avtech.com.tw	1017-1011-1013-1001-FFFF
4	Qnap	VS-2104 Pro+	https://www.qnap.com/en/index.php	5.0.2
5	Samsung	SRN-472S	http://www.samsung.com/au/ctvlp-nvr-solution	V1.06_150818163612
6	Synology	DS115j	https://www.synology.com/en-global	DSM 6.0.2-8451, Update1