



# Quick Installation Guide

ENS202  
ENS500-AC  
ENS202EXT  
ENS610EXT  
ENS620EXT  
ENS500EXT-AC  
Version 1.1

Outdoor Access Point/Client Bridge

## Package Contents



AP/Bridge



Power Cord



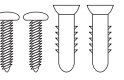
PoE Adapter



Pole Mounting Strap x1



Quick Installation Guide



Wall Mount Screw Set



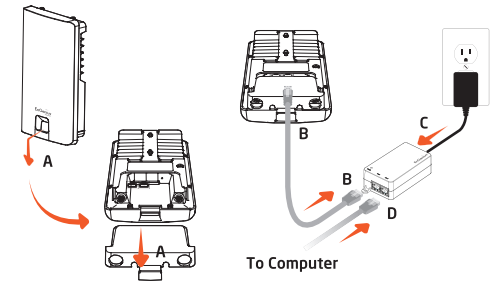
Detachable Antennas  
(ENS202EXT: **2x** 2.4GHz Antennas ;  
ENS500EXT-AC: **2x** 5GHz Antennas ;  
ENS610EXT/ ENS620EXT: **2x** 2.4GHz Antennas,  
**2x** 5GHz Antennas)

## Minimum Requirements

- + Broadband Internet Service (Cable or DSL Modem)
- + Internet Browser (Internet Explorer, Safari, Firefox, Chrome, Edge)

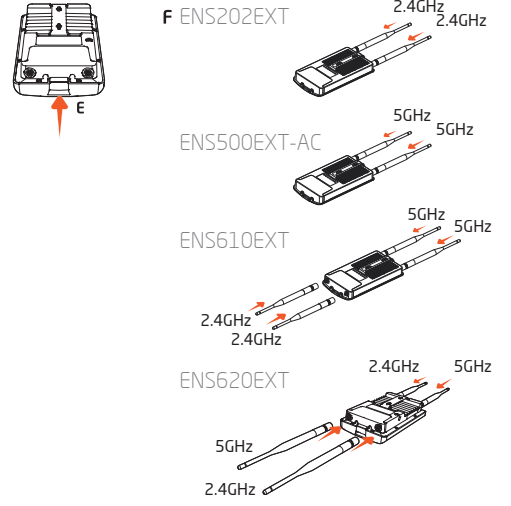
## 1 Connecting the AP/ Bridge

- A) Remove the rear bottom panel.
- B) Connect one end of the Ethernet cable into the LAN(PoE) port of the AP/Bridge and the other end to the PoE Port on the PoE Adapter.
- C) Connect the Power cord with the PoE Adapter and plug the other end into an electrical outlet.
- D) Connect the second Ethernet cable into the LAN port of the PoE Adapter and the other end to the Ethernet Port on the computer.
- E) Place the panel removed from step A back into the device.



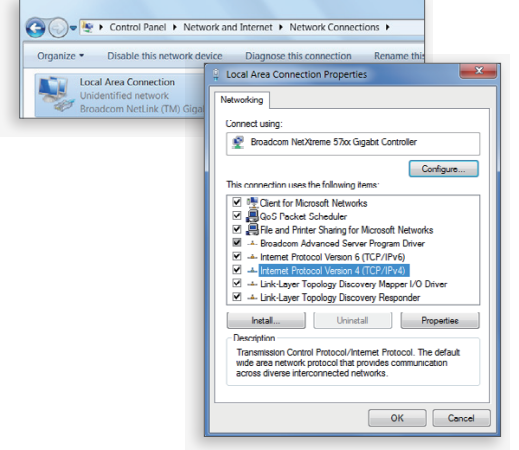
F) Screw on the provided antennas to the top of devices (External Antennas devices only).

**Note:** The AP/Bridge should ONLY be powered via Ethernet cable connected to the included PoE Adapter.

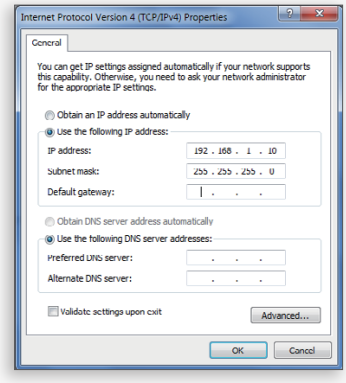


## 2 IP Address Configuration

A) Once your computer is on, ensure that your TCP/IP is set to **On** or **Enabled**. Open **Network Connections** and then click **Local Area Connection**. Select **Internet Protocol Version 4 (TCP/IPv4)**.

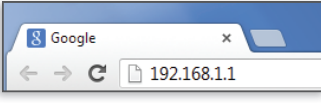


B) If your computer is already on a network, ensure that you have set it to a Static IP Address on the interface. (Example: 192.168.1.10 and the Subnet Mask address as 255.255.255.0.)

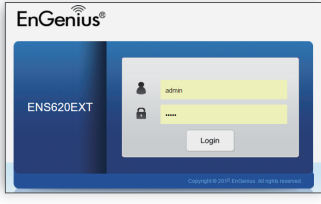


## 3 AP/Bridge Setup

A) To configure the AP/Bridge, open a web browser. In the address bar of web browser, enter **192.168.1.1** and hit enter.



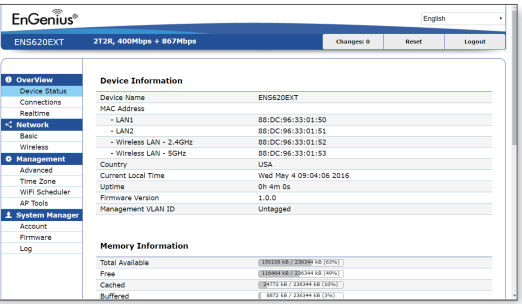
B) A login screen will appear. By default, the user-name of the AP/Bridge is **admin** and the password is **admin**. Enter the current username and password of the AP/Bridge and then click **Login**.



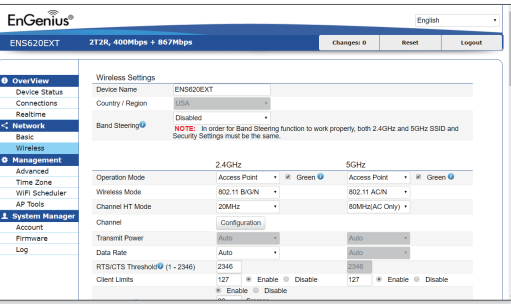
**Note:** The model name on login screen depends on the product you're using.

## 4 Switching Modes

A) The device can operate in the following modes: Access Point, Client Bridge, WDS AP, WDS Bridge, and WDS Station.



B) Click on the **Wireless** link under the **Network** and setup the Operation Mode.

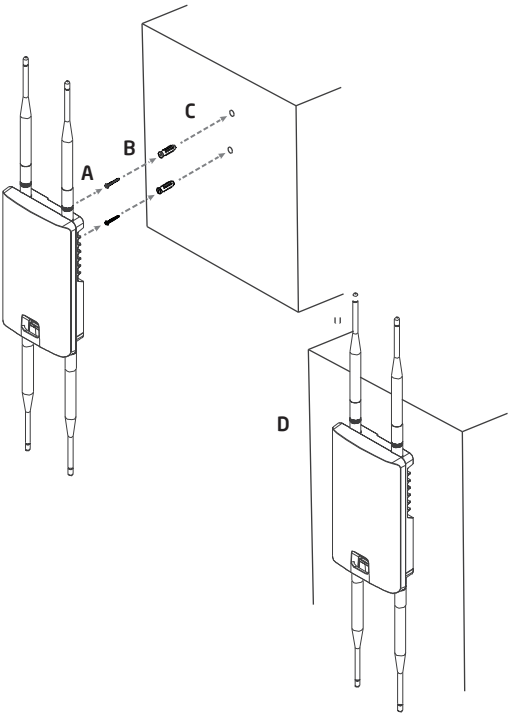


\* It may take up to 90 seconds for device to initially power up.

## 5 Mounting AP/Bridge

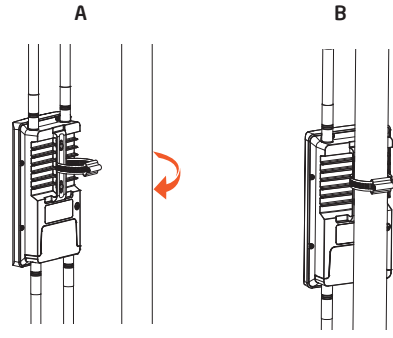
### Wall Mounting the Access Point

- A) Determine where the Access Point to be placed and mark location on the surface for the two mounting holes. Use the appropriate drill bit to drill two 8.1mm diameter and 26mm depth holes in the markings and hammer the bolts into the openings.
- B) Screw the anchors unto the holes until they are flush with the wall.
- C) Screw the included screws into the anchors.
- D) Place the Access Point against wall with the mounting screw heads.



### Pole Mounting the Access Point

- A) Thread the open end of the Pole Strap through the two tabs on the Pole Mount Bracket.
- B) Lock and tighten Pole Strap to secure Pole Mount Bracket to the pole.



## Technical Support

Country of Purchase	Service Center	Service Information
<b>North America</b> www.engeniustech.com	<b>Canada</b>  <b>Los Angeles, USA</b>	rma@engeniustech.com Toll Free: 888 397 2788 Local: (+1) 905 940 8181  support@engeniustech.com Toll Free: 885 735 7888 Local: (+1) 714 432 8668
<b>Europe</b> www.engeniustech.com	<b>Netherlands</b>	support@engeniustech.com Local: (+31) 40 8200 887
<b>Africa / CIS / Middle East</b> www.engeniustech.com	<b>Dubai, UAE</b>	support@engeniustech.com Toll Free: 0800 364 364 87 Local: (+971) 4 357 5599
<b>Asia / Oceania</b> www.engeniustech.com.sg	<b>Singapore</b>	techsupport@engeniustech.com.sg Local: (+65) 6227 1088
<b>Taiwan</b> www.engeniustech.com.tw	<b>Taiwan, R.O.C.</b>	twsupport@engeniustech.com Toll Free: 0800 003 885 Local: (+886) 2 2652 1808

## Notes

Maximum data rates are based on IEEE 802.11 standards. Actual throughput and range may vary depending on many factors including environmental conditions, distance between devices, radio interference in the operating environment, and mix of devices in the network. Features and specifications subject to change without notice. Trademarks and registered trademarks are the property of their respective owners. For United States of America: Copyright © 2018 EnGenius Technologies, Inc. All rights reserved.

