



EnGenius FitController On-Premises Network Management

FitController puts IT managers in charge with effortless Wi-Fi setup and management.



EnGenius FitController is a simple, secure, and easy-to-use wired & wireless network management solution for your small business. Our intuitive system makes it easy to manage your network. Plus, our advanced security features help keep your data safe, and your customers connected.

For IT managers or admins at small businesses who need to manage access points and switches quickly and easily, FitController's intuitive interface and simple plug-and-play integration securely provide efficient device management, while cloud accessibility allows remote management of multiple networks from a single portal without requiring a dedicated server. Admins can easily view detailed analytics from a single pane of glass as well as monitor and troubleshoot issues instantly.

Features & Benefits

- Plug and play installation. Simply plug into PoE Ethernet switch. No additional download or training required.
- Fast deployment with quick-scan device registration & configuration.
- Network management for up to 100 EnGenius Fit access point and switches.
- License-free On-Premises network management with a comprehensive line of wired and wireless networking products.
- Hierarchy view to quickly structure customer sites and organize networks.
- Network health view to analyze networks and report potential issues.
- Multi-tenant user login privileges.
- Device two-factor authentication to ensure only authorized devices are on the network.
- Enhanced Wi-Fi security WPA3 for employee as well as guests.
- Support up to 8 networks per user account.
- Create separate employee and guest networks to keep traffic isolated.
- Set limits to stop bandwidth hogs.
- Built-in powerful Qualcomm Qual-Core CPU.
- Micro SD slot for extra back-up.
- 802.3af or DC12/1A input power source.
- Remote maintenance, monitoring & troubleshooting with EnGenius FitXpress or EnGenius Cloud.

Benefits to Help Grow Your Business

Enable Smart Networks

EnGenius FitController increases efficiency by reducing network issues and allowing your team to focus on growing the business instead of managing networks.

Simplify the Complex

FitController requires no complicated installation—simply plug and play. The intuitive interface allows you to register, configure, and add devices to your network in just a few clicks.

Register Devices

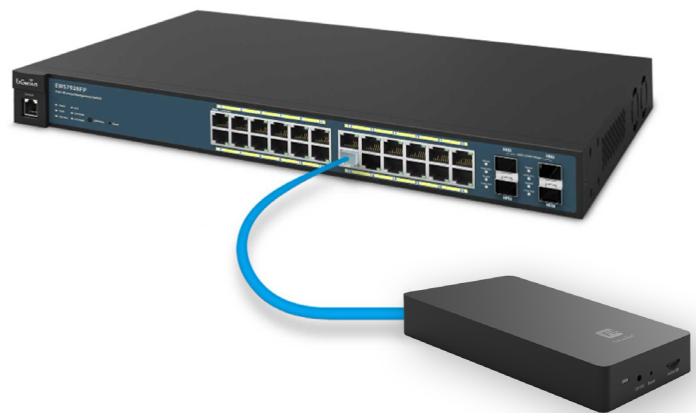
Pending Approval

Manually

<input type="checkbox"/>	Serial Number	Model	MAC
<input type="checkbox"/>	2270X2914ETR	EWS357-FIT	88:DC:97:0B:1B:4A

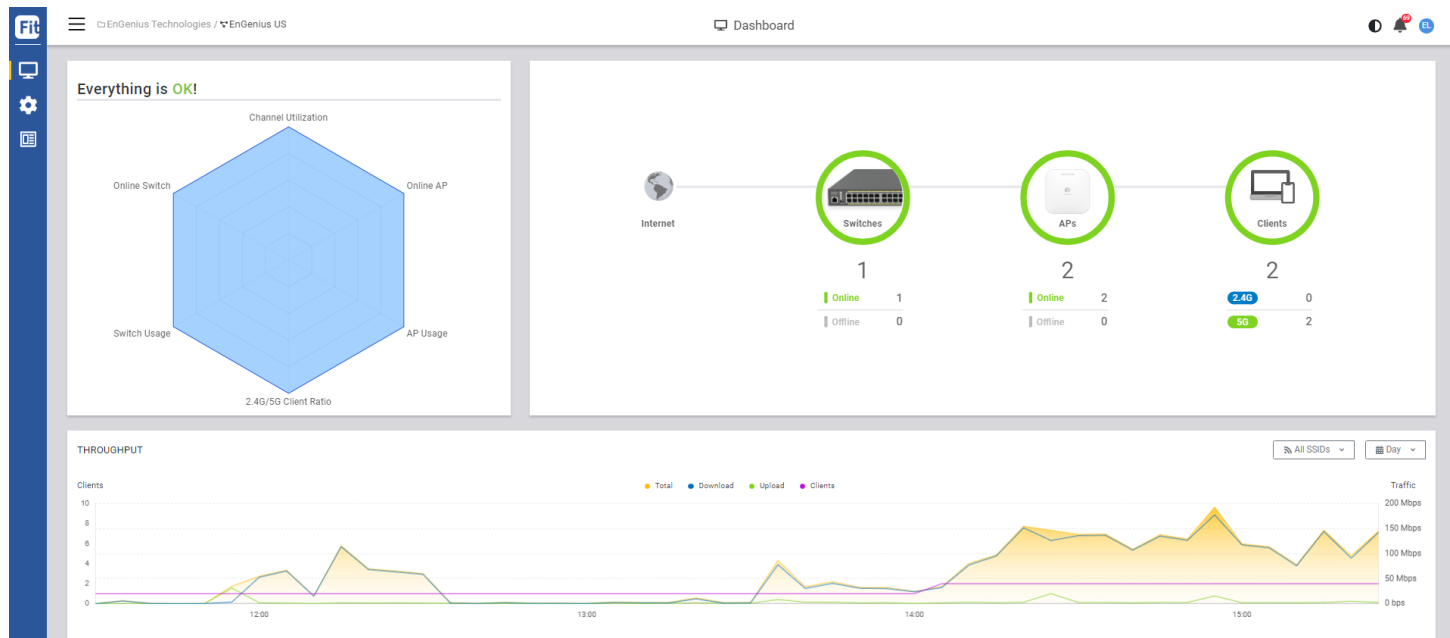
Cancel

Register



Manage From a Single Pane of Glass

The intuitive interface and effortless integration securely provide efficient device management of multiple networks from a single portal.



Safeguard Your Staff and Resources

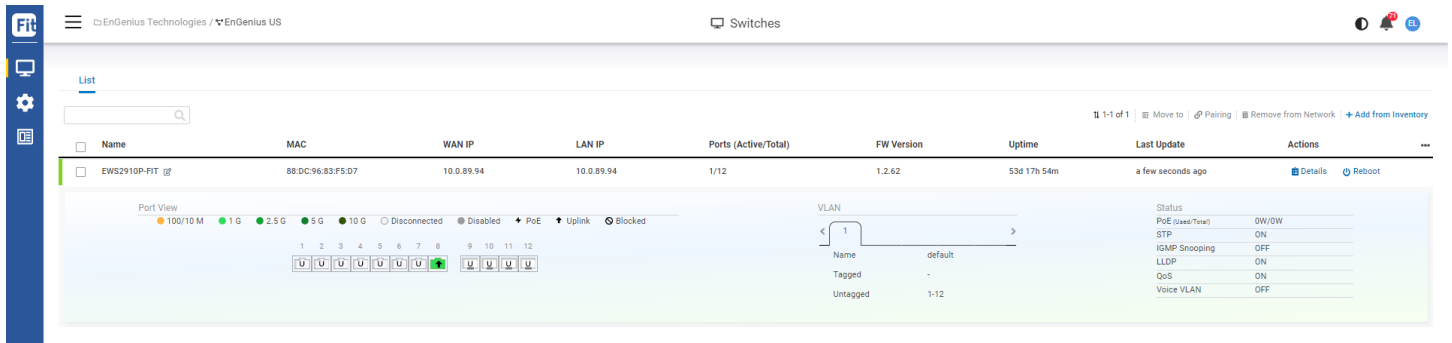
Because it's deployed at every site, the FitController offers an always-on, secure, single sign-on service. Its security protocols keep your data and devices safe while two-factor authentication prevents access in case passwords are compromised.

The screenshot shows the 'Two-Factor Authentication' setup page in the FitController interface. It includes a sidebar with navigation icons and a main content area with two steps. Step 1 involves scanning a QR code or manually adding an entry via Google Authenticator. The QR code is displayed, and the account information is shown: Account: @enginustech.com, Key: B56PVWLCORUWDBATZ5VDTH3B2HGJVUUJ, Time based: Yes. Step 2 involves entering the 2FA token shown on the Google Authenticator app. A text input field and an 'Activate' button are provided. On the right, there is a 'Wireless' configuration panel with various settings like Name, Enabled, Hide, Radio, Security Type, 802.11r, 802.11w, Client IP Mode, Default VLAN, Dynamic Client VLAN Pooling, Enable Application Analysis, and Advanced Settings.

Enjoy Time-Saving Management Features

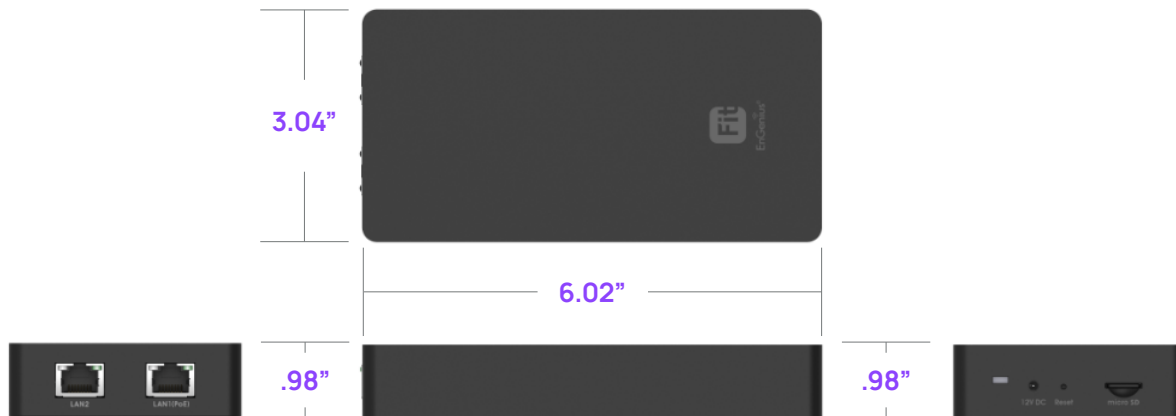
Easily view the general status or deep-dive analytics of up to one hundred devices while troubleshooting and resolving issues from a single management interface.

The screenshot shows the 'Access Points' management interface in the FitController. It features a sidebar with navigation icons and a main content area. At the top, there is a 'List' tab and a search bar. Below the search bar, there is a table with columns: Name, MAC, WAN IP, LAN IP, Clients (2.4G/5G), FW Version, Network, Uptime, Last Update, and Actions. Two access points are listed: EWS357-FIT and EWS357-FIT. Below the table, there is a detailed view for the selected access point. This view includes a 'Radio' section with settings for 2.4G and 5G bands, a 'WLAN' section with SSID and status settings, and a 'Mesh' section with options for enabling the radio and joining the mesh network. There are also graphs for 'Throughput' and 'Channel Utilization' showing performance over time. A 'Things look good!' notification is displayed. At the bottom right, there is an 'Apply' button.



Put this Controller Anywhere

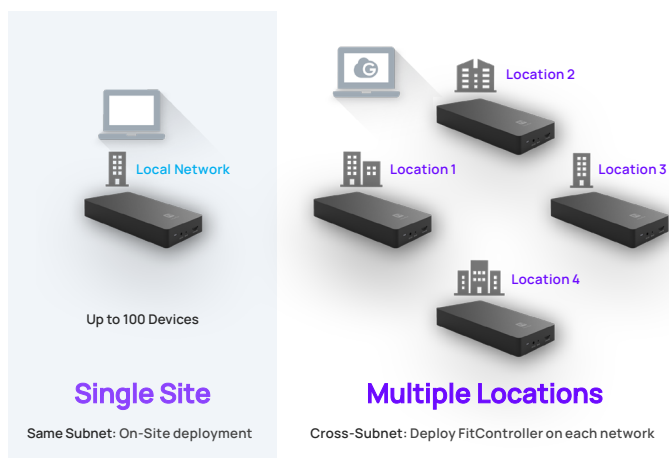
Its compact size means you can put the FitController anywhere—even in tight, small spaces.



Choose Your Options

On-premises network management allows admins to manage your network locally or through the cloud, which allows remote management of multiple networks from a single portal. FitController allows you to check your network any place, any time.

Network Deployment with FitController



Just Plug Into PoE Port on any Switch



Total Control

FitController is affordable but highly secure, allowing you to create separate business & guest networks, and limit network availability to bandwidth hogs. You determine who can access your network and when. You establish the bandwidth for staff, customers, and applications. You're in total control!

Fit

EnGenius Technologies / EnGenius US

SSID • New SSID

Wireless

Bandwidth Limit

Captive Portal

Splash Page

Schedule

Access Control

Clone From

Apply

Name

Guest Network

Enabled

☒

Hide

☐

Radio

☐ 2.4GHz ☐ 5GHz ☒ 2.4GHz & 5GHz

Security Type

☐ Open

Less or no secure

☒ WPA2-PSK

Secure

☐ WPA3-PSK (SAB) - WPA3 only

Secure

☐ WPA3/WPA2-PSK mixed

Secure

☐ WPA2 Enterprise

More secure

☐ WPA3 Enterprise

More secure

(Note: In conflict with NAT Mode, Captive Portal and VLAN Pooling.)

802.11r

☒

802.11w

☒

Client IP Mode

☒ NAT Mode

☐ Custom DNS

Server 1

8.8.8.8

Server 2

8.8.4.4

Bridge Mode

☐

Default VLAN

☒ Select a VLAN ID

Fit

EnGenius Technologies / EnGenius US

SSID • New SSID

Wireless

Bandwidth Limit

Captive Portal

Splash Page

Schedule

Access Control

Clone From

Apply

Enabled

☒

☒ Per Client

Download

50

Mbps (1 ~ 999 Mbps)

Upload

50

Mbps (1 ~ 999 Mbps)

☒ Per SSID

Download

50

Mbps (1 ~ 999 Mbps)

Upload

50

Mbps (1 ~ 999 Mbps)

Recommendation

Application	Bandwidth per client
Basic Mail & Web Browsing	1 Mbps (download)
SD Streaming	3 Mbps (download)
HD Streaming	8 Mbps (download)
Live Streaming	5 Mbps (upload) [720p] 7 Mbps (download) [1080p]
Online Game	5 Mbps (upload) 10 Mbps (download)
4K Streaming	25 Mbps
High-Speed Internet	50 Mbps

Satisfaction Guaranteed


FitController was built with the small business owner in mind, giving you all the essentials you need and taking the complexity out of network setup & management.

Fit

EnGenius Technologies / EnGenius US

Switches > EWS2910P-FIT

< EWS2910P-FIT



Model Name

ECS2512

Firmware

1.2.62

MAC Address

88:DC:96:83:F5:D7

Configuration

Up-to-date

IP Address

10.0.89.94

Subnet Mask

255.255.255.0

Gateway

10.0.89.1

Topology

Show

LED Light

LED Blinking

Voice VLAN

OFF

Jumbo Frame

OFF

IGMP Snooping

OFF

STP

ON

LLDP

ON

QoS

ON

Summary

System Conf.

Ports

VLAN

Mirror

Link Aggregation

Logs

PORTS

100/10 M

1 G

2.5 G

5 G

10 G

Disconnected

Disabled

PoE

Uplink

Blocked

1

2

3

4

5

6

7

8

9

10

11

12

Configure


<input type="checkbox"/>	Port	Label	Enabled	Voice VLAN	Speed/Duplex	PoE	PVID	Untagged VLAN	Tagged VLAN	Isolation	Rate Limit (Tx/Rx)	Flow Control	QoS	PD Lifeguard	...
<input type="checkbox"/>	1		Yes	Disabled	Auto	-	1	1	-	Not isolation	None/None	On	0	Disabled	
<input type="checkbox"/>	2		Yes	Disabled	Auto	-	1	1	-	Not isolation	None/None	On	0	Disabled	
<input type="checkbox"/>	3		Yes	Disabled	Auto	-	1	1	-	Not isolation	None/None	On	0	Disabled	
<input type="checkbox"/>	4		Yes	Disabled	Auto	-	1	1	-	Not isolation	None/None	On	0	Disabled	
<input type="checkbox"/>	5		Yes	Disabled	Auto	-	1	1	-	Not isolation	None/None	On	0	Disabled	
<input type="checkbox"/>	6		Yes	Disabled	Auto	-	1	1	-	Not isolation	None/None	On	0	Disabled	
<input type="checkbox"/>	7		Yes	Disabled	Auto	-	1	1	-	Not isolation	None/None	On	0	Disabled	
<input type="checkbox"/>	8		Yes	Disabled	Auto	-	1	1	-	Not isolation	None/None	On	0	Disabled	

Fit

EnGenius Technologies / EnGenius US

Switches > EWS2910P-FIT

< EWS2910P-FIT



Model Name

ECS2512

Firmware

1.2.62

MAC Address

88:DC:96:83:F5:D7

Configuration

Up-to-date

IP Address

10.0.89.94

Subnet Mask

255.255.255.0

Gateway

10.0.89.1

Topology

Show

LED Light

LED Blinking

Voice VLAN

OFF

Jumbo Frame

OFF

IGMP Snooping

OFF

STP

ON

LLDP

ON

QoS

ON

Summary

System Conf.

Ports

VLAN

Mirror

Link Aggregation

Logs

Reset

Apply

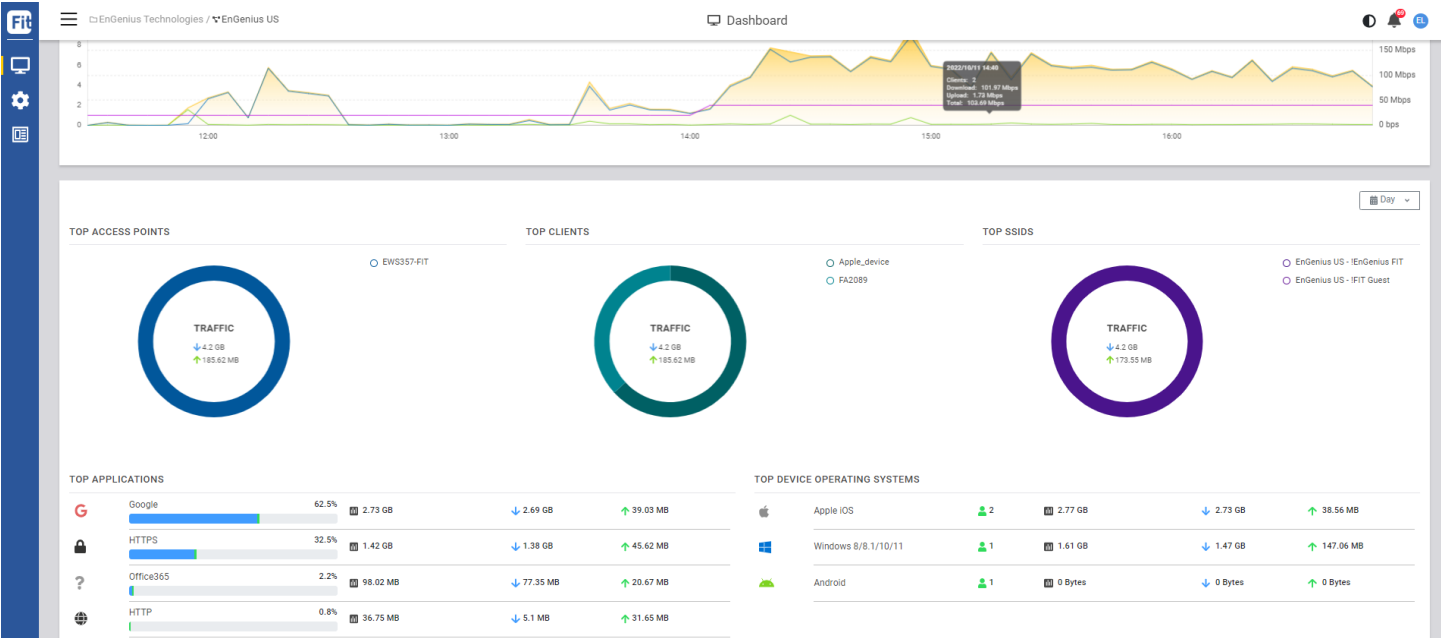
VLAN

+ Add VLAN

VLAN ID	Name	Tagged	Untagged	
1 (Management)	default		1-12	Edit
500	Guest			Edit
1000	Staff			Edit

Reliable Performance

You can always depend on FitController to keep you connected to your staff and customers with stable Wi-Fi and unparalleled performance. EnGenius Fit access points automatically prioritize business-critical video and voice calls.

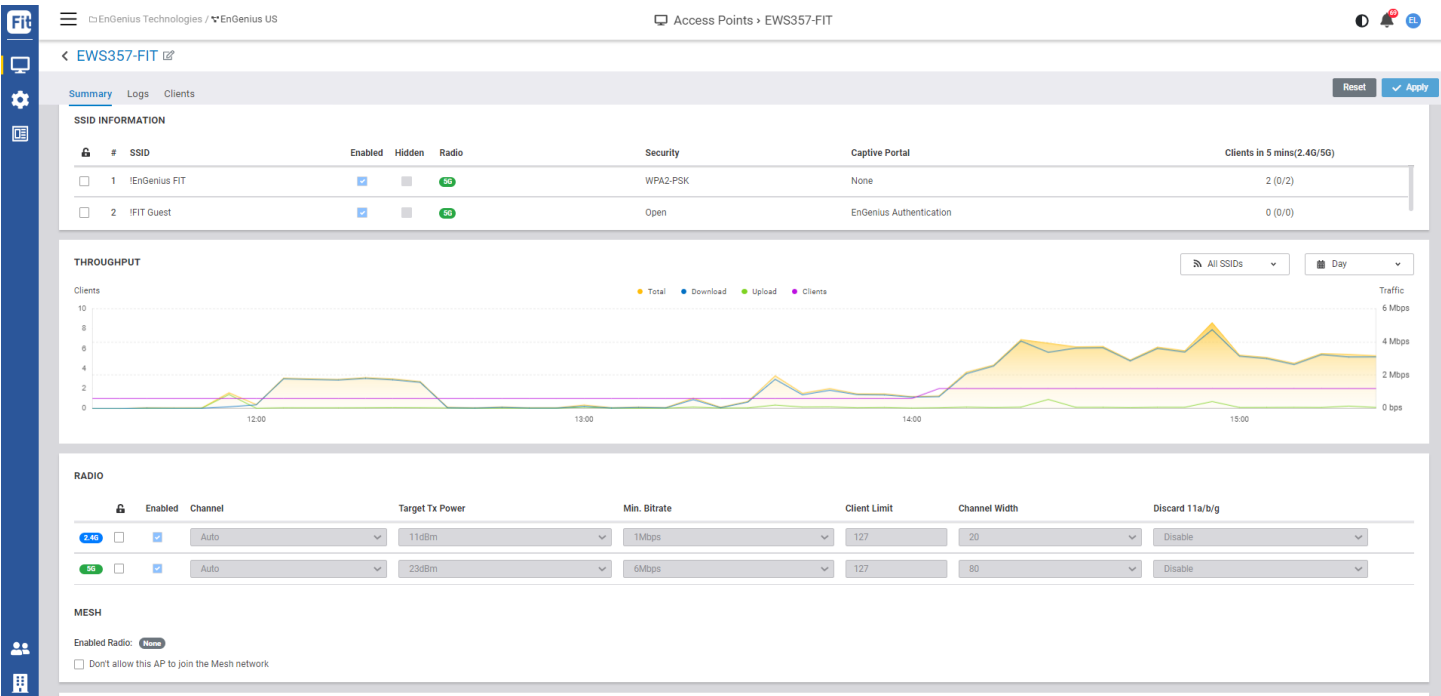


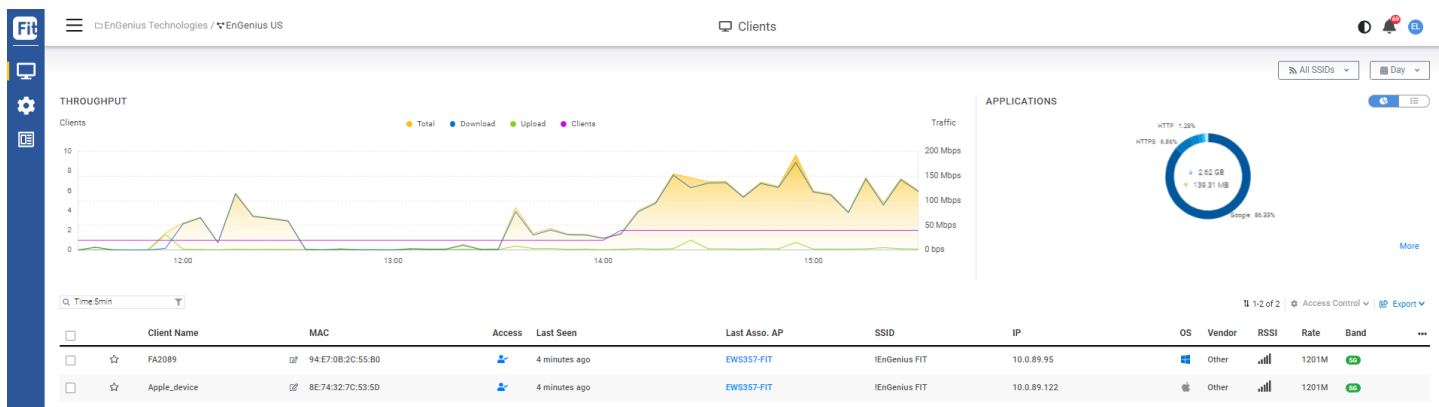
No Hidden Fees

Enjoy the benefits of business-grade Wi-Fi with no subscription or license fees. FitXpress is the affordable solution!

View Real-Time Status of Network and Client Devices

Business owners have the ability to see devices and client status, port connection states, and PoE utilization to better evaluate and assess networks.





Multi-Tenant Provides User Access While Keeping the Network Secure

Business owners can assign each user as either administrator (full access privileges) or viewer (read only privileges).

The 'Invite New Member' dialog box shows a list of user emails on the left and a tree view of networks on the right. The networks listed are Fit Controller, EnGenius Technologies, EnGenius US, and EnGenius Canada. The 'Permission' dropdown is set to 'Admin'.

User Email (one per row)

- tom.lee@gmail.com
- john.lee@gmail.com
- david.lee@gmail.com

Networks

- Fit Controller (Admin)
- EnGenius Technologies
 - EnGenius US (Admin)
 - EnGenius Canada

Buttons: Cancel, Apply

Latest Wireless Security

Simply use secure WPA3 on your network to increase network security.

The 'Wireless' configuration page shows settings for a 'Guest Network'. The 'Enabled' toggle is turned on. The 'Radio' section shows '2.4GHz & 5GHz' selected. The 'Security Type' section shows 'WPA3-PSK (SAE) - WPA3 only' selected, with a password field.

Name: Guest Network

Enabled: ☒

Hide: ☐

Radio: ☐ 2.4GHz ☐ 5GHz ☒ 2.4GHz & 5GHz

Security Type: ☐ Open ☐ WPA2-PSK ☒ WPA3-PSK (SAE) - WPA3 only

Password: [Redacted]

Hardware Solution Simplified






Access Points — EnGenius FitController provides tools to help manage access points and quickly solve any issues. The access point view gives administrators the ability to review all access points in one window to compare resources, radio configurations, and IP settings as well as see details on specific APs.

Switches — For quick and simple setup, manage your switches using EnGenius FitController. Simply refine configurations under the list view for switches in the switch detail page after initial setup and registration. Companies can choose from four options based on port and PoE needs.

Choose from among EnGenius Fit indoor and outdoor APs.

	INDOOR		OUTDOOR
			
	2X2 INDOOR ACCESS POINT	4X4 INDOOR ACCESS POINT	2X2 OUTDOOR ACCESS POINT
MODELS	EWS357-FIT	EWS377-FIT	EWS850-FIT
Standard	Wi-Fi 6 (802.11ax)	Wi-Fi 6 (802.11ax)	Wi-Fi 6 (802.11ax)
Frequency	2.4GHz & 5 GHz	2.4GHz & 5 GHz	2.4GHz & 5 GHz
Throughput Rate	574Mbps @2.4GHz, 1200Mbps @5GHz	1148Mbps @2.4GHz, 2400Mbps @5GHz	574Mbps @2.4GHz, 1200Mbps @5GHz
Radio Chain	2x2:2	4x4:4	2x2:2
Gigabit Ethernet Ports	(1) 1 Gbps	(1) 2.5 Gbps	(1) 2.5 Gbps
PoE Power	802.3af	802.3at	802.3at

Choose from among EnGenius Fit 8, 24, and 48-port switches.

					
	8-PORT POE SWITCH	24-PORT HALF POE BUDGE SWITCH	24-PORT FULL POE BUDGE SWITCH	48-PORT HALF POE BUDGE SWITCH	48-PORT FULL POE BUDGE SWITCH
MODELS	EWS2910P-FIT	EWS7928P-FIT	EWS7928FP-FIT	EWS7952P-FIT	EWS7952FP-FIT
PoE Power Budget	55W	240W	410W	410W	740W
Gigabit Copper Port	8	24	24	48	48
Gigabit Uplinks Port	2 SFP	4 SFP	4 SFP	4 SFP	4 SFP
PoE	802.3af for all 8 ports	802.3af/at for all 24 ports	802.3af/at for all 24 ports	802.3af/at for all 48 ports	802.3af/at for all 48 ports
Switching Capacity	20 Gbps	56 Gbps	56 Gbps	104 Gbps	104 Gbps
Managed	Layer 2 Plus	Layer 2 Plus	Layer 2 Plus	Layer 2 Plus	Layer 2 Plus

Technical Specifications

SOFTWARE FEATURES	AP Usage	Number of client device in 5 GHz radio
MANAGE	Switch Usage	Throughput
DASHBOARD	2.4G or 5G Client Ration	Client
Manage Access Points/Switches	Number of Online Switch	Traffic:
Status	Number of Offline Switch	<ul style="list-style-type: none"> Total Download Upload
Channel Utilization	Number of Online AP	Traffic
Online AP	Number of Offline Switch	Top Access Point
Online Switch	Number of client device in 2.4 GHz radio	

Top Clients
Top SSIDs
Top Applications
ACCESS POINTS
Display
Name
MAC address
Model Name
WAP IP
LAN IP
Client (2.4G/5G)
FW Version
Network
Uptime
Last Update
Mesh Mode
Action: <ul style="list-style-type: none"> Detail Reboot
Throughput
Channel Utilization
Radio: <ul style="list-style-type: none"> 2.4GHz 5GHz Unlock Enabled Channel Target TX Power Channel Width
WLAN: <ul style="list-style-type: none"> SSID Status
Mesh: <ul style="list-style-type: none"> Don't allow this AP to join the Mesh network Location
Detail
Device Information
Model Name
Firmware
Serial Number
MAC Address
Configuration
IP Address
Subnet Mask
Gateway
Topology
LED Light
LED Blinking
2.4 GHz Channel & TX Power
5 GHz Channel & TX Power
Summary

SSID Information
Unlock
SSID
Enabled
Hidden
Radio
Security
Captive Portal
Clients in 5 mins (2.4GHz/5GHz)
Throughput
Client
Traffic: <ul style="list-style-type: none"> Total Download Upload
Radio
2.4GHz and 5GHz
Unlock
Enabled
Channel
Target Tx Power
Min. Bitrate
Client Limit
Channel Width
Discard 11a/b/g
Mesh: <ul style="list-style-type: none"> Don't allow this AP to join the Mesh network
IP Addressing
Static
DHCP
IPv4 Address
Subnet Mask
Gateway
DNS Server 1
DNS Server 2
Management VLAN
Log
ADD Filter
Time
Event Type
Description
Clients
Filter
Favorite
Time
SSID
OS
Client
IP

List
Client Name
MAC
Access
Last Seen
SSID
IP
OS
Vendor
RSSI
Rate
Band
Download
Access Control
VIP
Block
Normal
Export
CSV file
SWITCHES
Display
Name
MAC address
Model Name
WAP IP
LAN IP
Ports (Active/Total)
FW Version
Network
Uptime
Last Update
Mesh Mode
Action: <ul style="list-style-type: none"> Detail Reboot
Port View: <ul style="list-style-type: none"> Speed Disconnected Disabled PoE Uplink Blocked
VLAN: <ul style="list-style-type: none"> Name Tagged Untagged
Status: <ul style="list-style-type: none"> PoE STP IGMP Snooping LLDP QoS Voice VLAN

Detail
Device Information
Model Name
Firmware
Serial Number
MAC Address
Configuration
IP Address
Subnet Mask
Gateway
Topology
LED Light
LED Blinking
2.4 GHz Channel & TX Power
5 GHz Channel & TX Power
Summary
SSID Information
Unlock
SSID
Enabled
Hidden
Radio
Security
Captive Portal
Clients in 5 mins (2.4GHz/5GHz)
Throughput
Clients
Traffic: <ul style="list-style-type: none">TotalDownloadUpload
Radio
2.4GHz and 5GHz
Unlock
Enabled
Channel
Target Tx Power
Min. Bitrate
Client Limit
Channel Width
Discard 11a/b/g
Mesh: <ul style="list-style-type: none">Don't allow this AP to join the Mesh network
IP Addressing
Static
DHCP
IPv4 Address
Subnet Mask
Gateway

DNS Server 1
DNS Server 2
Management VLAN
System Conf.
Voice VLAN
Voice VLAN ID
QoS Priority
Mode
OUIs
Quality of Service
Trust Mode
Scheduling Method
Queue Mapping
IGMP Snooping
Version
VLAN
Jumbo Frames
MTU Size
Local GUI
Debug Log Upload
Information
Location
Size
Upload
Ports
Display
Port
Label
Enabled
Voice VLAN
Speed/Duplex
PoE
PVID
Untagged VLAN
Tagged VLAN
Isolation
Rate Limit (Tx/Rx)
QoS
Configure
Enable
Label
Speed/Duplex
VLAN: <ul style="list-style-type: none">PVIDEnabled Voice VLAN
Isolation
Rate Limit
VLAN
VLAN

VLAN ID
Name
Tagged
Untagged
Mirror
Mirror
Session ID
Session State
Destination Port
Egress
Ingress
Link Aggregation
Trunk
ID
Aggregation Type
Active Ports
Member Ports
Logs
Add Filter
TOPOLOGY
Show Label
Redundant
CLIENTS
Throughput
Client
Traffic: <ul style="list-style-type: none">TotalDownloadUpload
Filter: <ul style="list-style-type: none">FavoriteTimeSSIDOSClientLast Associate APIP
Display: <ul style="list-style-type: none">Client NameMACAccessLast SeenLast Asso. APSSIDIPOSVendorRSSIRateBand
Access Control
Export

CONFIGURE
SSID
Display
SSID
Radio
Enabled
Hidden
Security
Captive Portal
Splash Page
Bandwidth Limit
Scheduling
Application Analysis
Add SSID
Wireless
Name
Enabled
Hide
Radio
Security Type: <ul style="list-style-type: none"> WPA2-PSK WPA3-PSK WPA2-Enterprise WPA3-Enterprise
802.11r
802.11w: <ul style="list-style-type: none"> All clients Allow 11w-clients only
Client IP Mode: <ul style="list-style-type: none"> NAT Mode Bridge Mode
Default VLAN
Dynamic Client VLAN Pooling
Enable Application Analysis
Advanced Settings
L2 Isolation
Band Steering: <ul style="list-style-type: none"> Type RSSI Threshold Client Percent
BCMC Suppression
Bandwidth Limit
Per Client: <ul style="list-style-type: none"> Download Upload
Per SSID: <ul style="list-style-type: none"> Download Upload
Recommendation: <ul style="list-style-type: none"> Application Bandwidth

Captive Portal
Authentication Type: <ul style="list-style-type: none"> Click-through EnGenius Authentication Custom Radius Voucher Service
Redirect URL: <ul style="list-style-type: none"> Redirect to the URL that the user was trying to visit Redirect users to a specified URL after login
Advanced Setting: <ul style="list-style-type: none"> Session Timeout Idle Timeout Walled Garden HTTPS Login
Splash Page
Splash Page Type: <ul style="list-style-type: none"> External Splash Page URL Local Splash Page
Schedule
Scheduling
Quick Template
Access Control
Block List
VIP List
RADIO SETTINGS
Indoor & Outdoor
Radio
Channel
Channel Width
Target Tx Power
Min. Bitrate
Client Limit
Discard 802.11a/b/g
Disable 11as
Background Scanning
Client Balancing
Mesh
FITCON USER
RADIUS Users
Display
Name
Email
Authorized SSID
Create Date
Status
Add User
Email
Name
Password
SSID Authorization

Authorized SSIDs
Display
Name
Email
Authorized by
Authorized Date
De-authorize
FIRMWARE UPGRADE
AP
Firmware Lists: <ul style="list-style-type: none"> Model Firmware Version Upload Date Actions
Maintenance Window
Upload
Upgrade Now
Switch
Firmware Lists: <ul style="list-style-type: none"> Model Firmware Version Upload Date Actions
Maintenance Window
Upload
Upgrade Now
ALERT SETTINGS
AP
Basic: <ul style="list-style-type: none"> AP go offline for Event with severity
Professional: <ul style="list-style-type: none"> Configuration changed within network
Switch
Basic: <ul style="list-style-type: none"> AP go offline for Event with severity
Professional: <ul style="list-style-type: none"> Configuration changed within network Switch Port link status change Switch STP port status change Switch LBD status change
VLAN SETTINGS
Display
VLAN ID
Name
Voice VLAN
SSID
Add VLAN
VLAN ID
Name

SWITCH SETTINGS	ACCESS CONTROL	SYSTEM INFORMATION
System & Protocols	Blocked List	Usage
Spanning Tree Protocol:	VIP List	CPU
<ul style="list-style-type: none"> Protocol Bridge Priority 	ANALYZE	Memory
LLDP	EVENT LOG	Disk
Voice VLAN	Device Event	System Up Time
Voice VLAN ID	Time	Software Version
QoS Priority	Device	Check for Update
Mode	Event Type	EMAIL ALERTS
OUIs:	Description / Detail	Mail Server
<ul style="list-style-type: none"> OUI Address Description 	System Event	SMTP Server
Quality of Service	Time	SMTP Port
Trust Mode	Device	Authentication
Scheduling Method	Event Type	User Name
Queue Mapping:	Description / Detail	Password
<ul style="list-style-type: none"> CoS DSCP 	Config Log	From Email Address
IGMP Snooping:	Time	To Email Address
<ul style="list-style-type: none"> Version VLANs 	Device	Subject
Jumbo Frames:	Event Type	BACKUP & RESTORE
<ul style="list-style-type: none"> MTU Size 	Description / Detail	Configuration Backup
GENERAL SETTINGS	TEAM MEMBERS	Name
Network	DISPLAY	Network
EnGenius US:	Name	Time
<ul style="list-style-type: none"> Country Time Zone 	Email	Creator
Local Credential:	System Permissions	Action
<ul style="list-style-type: none"> Username Password 	Network Managed	System Backup
SNMP:	Status	Backup System Configuration
<ul style="list-style-type: none"> SNMP State Community 	Last Login	Restore System Configuration
AP	Action	ACCOUNT PROFILE
LED Light	INVITE NEW MEMBER	Edit Profile
Syslog Server:	User Email	Password
<ul style="list-style-type: none"> Status Log Server Address Log Server Port 	Networks	Reset
Message for Blocked Client	Permission	Reboot
Advanced Settings	ORGANIZATION	Two-Factor Authentication
Presence Reporting:	INVENTORY	Notification Settings
<ul style="list-style-type: none"> Server Location Key Interval 	Devices	Logout
Traffic Log	Network	
Multicast to Unicast	Model	
Switch	Serial Number	
LED Light	MAC Address	
Syslog Server:	Registered Time	
<ul style="list-style-type: none"> Status Log Server Address Log Server Port 	Registered By	
	Register Device	
	Pending Approval:	
	<ul style="list-style-type: none"> Serial Number Model MAC 	
	Manually:	
	<ul style="list-style-type: none"> Serial Number 	

Product Images

